

tBOX100-838-FL NEW

Fanless Embedded System with Intel® Atom™ Processor E3845 for Vehicle, Railway and Marine PC

Features

- CE (Class A), E-Mark and ISO 7637 certified
- EN 50155, EN 50121 and DNV 2.4, IEC 60945 compliance
- Intel® Atom™ E3845 4C @ 1.91 GHz
- DDR3L-1333 4GB memory onboard
- Intelligent power management solution
- Compact size, multiple I/Os, DIN-rail and wall mount
- 1 PCIe Mini Card slot and 1 SIM card slot



▲ Front view



▲ Rear view



e13/ISO7637



EN50155



IEC60945



Fanless



Ext. Temp



DDR3L



Low Power

Specifications

| | | |
|-----------------------|---|---|
| Standard Color | Silver | |
| Construction | Aluminum extrusion and heavy-duty steel | |
| CPU | Intel® Atom™ processor E3845 (4C @ 1.91 GHz) | |
| System Memory | DDR3L-1333, 4GB memory onboard | |
| Chipset | SoC integrated | |
| BIOS | AMI | |
| System I/O Outlet | Rear Side | Option #1: 2 x M12 A-coded GbE LAN + 1x M12 DC power input Option #2: 2 x RJ-45 GbE LAN + 1 x Phoenix DC power input (Intel® i210 x2) 4 x Antenna opening |
| | Front Side | 1 x RS-232/422/485 1 x VGA 2 x USB 2.0 1 x Remote switch 1 x Reset button 4 video-in/1 x audio-in BNC |
| Watchdog Timer | 255 levels, 0 ~ 255 seconds/minutes | |
| Storage | 1 x 2.5" 9.5 mm SATA drive | |
| Expansion Interface | 1 x full-size PCIe Mini Card 1 x SIM card slot | |
| System Indicator | 1 x green LED indicator for system power 1 x green LED indicator for programmable #1 1 x green LED indicator for programmable #2 1 x yellow LED indicator for HDD active 1 x green LED indicator for LAN #1 active 1 x green LED indicator for LAN #2 active | |
| Power Supply | Power input: 9 ~ 36 VDC Typical: 12/24 VDC | |
| Operating Temperature | -40°C ~ +60°C (-40°F ~ +140°F) with W.T. SSD -25°C ~ +55°C (-13°F ~ +131°F) with W.T. HDD | |

| | |
|---------------------|--|
| Humidity | 5% ~ 95%, non-condensing |
| Vibration Endurance | 2 Grms w/ SSD (5 ~ 500Hz, X, Y, Z direction; random) 1 Grms w/ HDD (5 ~ 500Hz, X, Y, Z direction; random) |
| Shock | Comply EN 61373 section 10 table 3 category 1 class A and class B up to 5 Grms (30ms, ±X/Y/Z direction) |
| Dimensions | 163.8 mm (6.44") (W) x 108 mm (4.25") (D) x 44 mm (1.73") (H) |
| Weight (net/gross) | 0.77 kg (1.69 lb)/1.40 kg (3.09 lb) |
| Certificate | CE (Class A), E-Mark, ISO 7637 certified EN 50155, EN 50121 and DNV 2.4, IEC 60945 compliance |
| EOS support | Windows® 10, WE8S, WES 7, Linux, VxWorks7 |

Ordering Information

| Standard | |
|---------------------------------|--|
| tBOX100-838-FL-E3845-RJ-ACC-DC | Fanless vehicle/railway/marine embedded system with Intel® Atom™ E3845, 4GB RAM, 2 GbE LANs (RJ-45), phoenix DC-in, 1 COM, 5 BNC (4 x video-in/1 x audio-in), 1 capture card with ACC power setting (vehicle only) |
| tBOX100-838-FL-E3845-M12-ACC-DC | Fanless vehicle/railway/marine embedded system with Intel® Atom™ E3845, 4GB RAM, 2 GbE LANs (M12), phoenix DC-in, 1 COM, 5 BNC (4 x video-in/1 x audio-in), 1 capture card with ACC power setting (vehicle only) |
| Optional | |
| 2.5" SATA HDD/SSD | |
| 3G/4G module | |
| Wi-Fi module | |
| Wi-Fi & bluetooth | |
| GPS module | |
| CANbus module | |

*Specifications and certifications may vary according to various options.

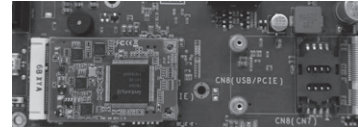
Expansion & Installation



1 x audio-in + 4 x video-in BNC connector for DVR surveillance system



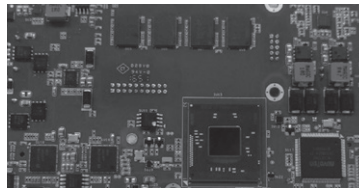
1 x Swappable HDD/SSD



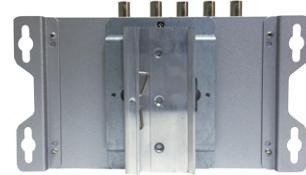
1 x PCIe Mini Capture Card
1 x PCIe Mini Card slot + 1 x SIM Card slot



Optional M12 type for DC-in jack and LAN jack



Onboard processor and system memory for great reliability and stability



Wall mount/DIN-rail supported for various applications, without space limitation

Packing List

- 1 x Quick Manual
- 1 x Driver CD
- 1 x Screws pack
- 4 x Foot pad
- 1 x Wall mount Kit
- 1 x DIN-rail Kit
- 1 x DIO female connector (Optional)

Power Protection

- SCP (short circuit protection)
- OVP (over voltage protection)
- UVP (under voltage protection)

Vehicle Version

- ISO 7637 pulse 1/2/3/4/5a
- Battery protection setting: Low voltage, very low voltage
- Ignition control setting: Low voltage counter, ACC-ON delay, shut down delay

Dimensions

