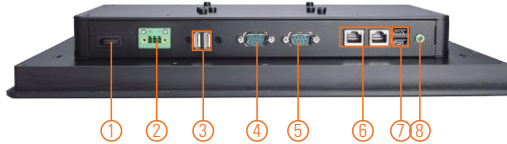
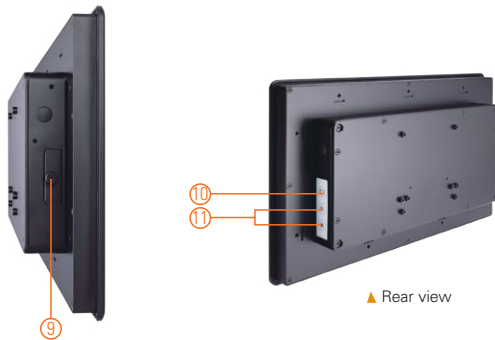
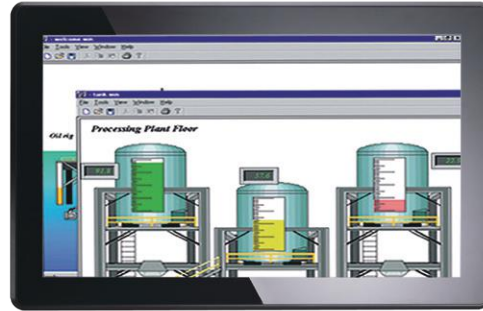


# GOT3157W-834-PCT

15.6" WXGA TFT Fanless Multi-touch Panel Computer with Intel® Celeron® Processor J1900 (-10°C to +50°C)

## Features

- 15.6" WXGA TFT with projected capacitive multi-touch
- Fanless design with Intel® Celeron® processor J1900 4C @ 2.0 GHz (Bay Trail)
- 2.5" SATA HDD & CFast™ or mSATA
- WLAN/3G module & antenna (optional)
- 2 GbE LAN, 2 USB 2.0, 2 USB 3.0 and 2 COM
- IP65 front bezel
- Supports panel mount and optional VESA arm/desktop stand/wall mount
- -10°C to +50°C wide operating temperature range
- Adjust RS-232/422/485 setting via BIOS



1. Power switch
2. Terminal block for DC power input
3. USB 2.0 x 2
4. COM 1 (RS-232/422/485)
5. COM 2 (RS-232/422/485)
6. Ethernet x 2
7. USB 3.0 x 2
8. Audio (Line-out)
9. CFast™ slot
10. Backlight switch
11. Brightness adjustment



## Introduction

The GOT3157W-834-PCT adopts a 15.6-inch WXGA LCD and supports Intel® Bay Trail-D processor. By supporting a wide range operating temperature from -10°C to +50°C, it can be used in harsh environment. The rugged industrial panel PC supports low power Intel® Celeron® processor J1900. It also provides two PCI Express Mini Card slots for 3G, wireless network connectivity. This 15.6" multi-touch panel computer is suitable for transportation, heavy-duty industry, smart factory automation, and oil pipe monitoring systems.

### Wide Temperature Range

The Intel® Bay Trail-based GOT3157W-834-PCT applies unique extended temperature technology with wide temperature range support as well as fanless operation. It also has a compact design for harsh environment.

### WLAN Antenna Supported (optional)

The 15.6" WXGA IP65 industrial panel PC, GOT3157W-834-PCT, provides two PCI Express Mini Card slots and WLAN antennas for 3G and wireless network connectivity.

## Specifications

Front Bezel	IP65 front bezel		
LCD Panel	Display Type	15.6" WXGA TFT LCD	
	Brightness (cd/m <sup>2</sup> )	400 nits	
	Resolution	1366 x 768	
Main System	CPU	Intel® Bay Trail-D Celeron® processor J1900 4C @ 2.0 GHz	
	Chipset	SoC Integrated	
	System Memory	1 x 204-pin DDR3L-1333/1600 SO-DIMM, up to 8GB	
	BIOS	AMI UEFI BIOS	
	Storage	1 x 2.5" SATA HDD 1 x CFast™ or 1 x mSATA	
	Watchdog Timer	255 levels, 0 ~ 255 sec.	
	Onboard Graphics	Integrated Intel® HD Graphics	

## Specifications

I/O Connector	2 x RS-232/422/485 (COM 1/2) 1 x switch for power on/off (ATX) 1 x audio (Line-out) 2 x USB 3.0 2 x USB 2.0 2 x 10/100/1000 Mbps Ethernet (Intel® i210AT)
Expansion Interface	2 x PCI Express Mini Card slot
Touchscreen	Projected Capacitive multi-touch
Power Supply	1. DC version: 9 ~ 36 VDC 2. AC version: 12 VDC with adapter
Power Consumption	45 W
Dimensions	396 mm (15.6") (W) x 53.9 mm (2.12") (D) x 247.1 mm (9.73") (H)
Packing Dimensions	525 mm (20.67") (W) x 470 mm (18.51") (D) x 186 mm (7.32") (H)
Weight (net/gross)	5.0 kg (11.02 lb)/7.0 kg (15.43 lb)
Environment	Operating temperature: -10°C ~ +50°C (+14°F ~ +122°F) Relative humidity: 20% ~ 90% @ +40°C; non-condensing Operation vibration: 2G, 10 ~ 500Hz, random for CompactFlash™
Certificate	CE



▲ Ideal for factory automation & self-service kiosk in retail

## Ordering Information

GOT3157W-834-PCT-J	15.6" WXGA TFT fanless touch panel computer with Intel® Celeron® J1900 2.0 GHz quad core processor, projected capacitive multi-touch screen and AC-DC 12 VDC power adapter (screw type connector)
GOT3157W-834-PCT-DC	15.6" WXGA TFT fanless touch panel computer with Intel® Celeron® J1900 2.0 GHz quad core processor, projected capacitive multi-touch screen and 9 ~ 36 VDC terminal block connector

## Optional Accessories

82231770050E	GOT3177T-834 wall mount kit
50906D24000E	Adaptor 24V/120W, wire only, FSP120-AAAN3

## Optional EOS Installation

WES7	
WE8S	

## Optional OS Installation

Windows® 8.1	
Windows® 7	

## Dimensions

