



SDXC/SDHC220 UHS-I U1 Card

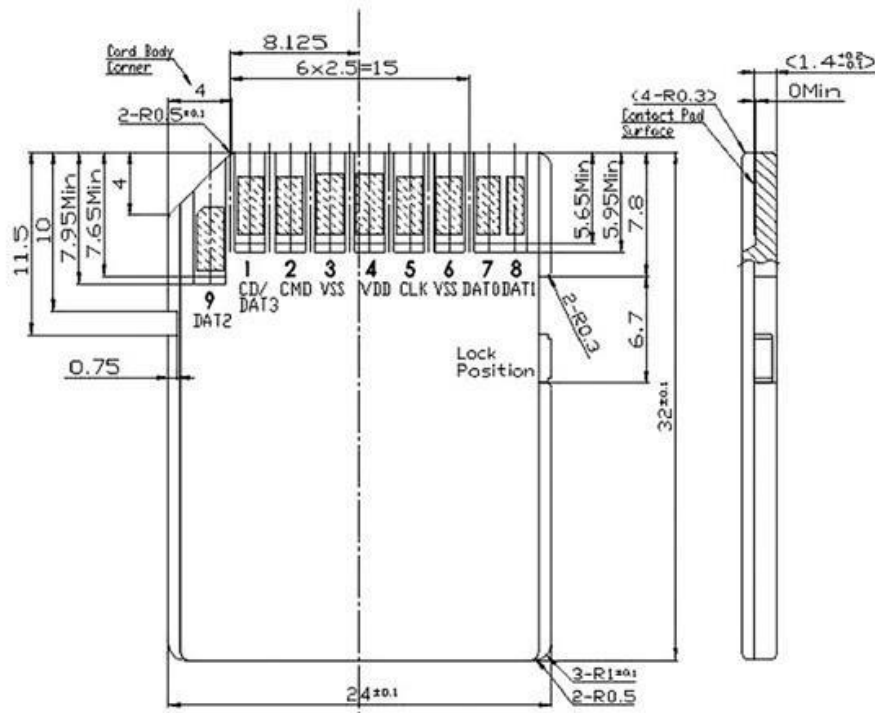
Transcend's SuperMLC technology is a cost-effective solution that offers performance close to that of SLC NAND flash. SuperMLC SDXC/SDHC220 UHS-I U1 Cards combine the advantages of high performance and exceptional endurance at an affordable price, making them ideal for demanding industrial applications such as POS terminals as well as portable devices equipped with an SD memory card slot.

Features

- RoHS compliant
- Manufactured with SuperMLC Flash
- Excellent endurance
- Cost-effective solution

- Compatible with SD Specification Ver. 3.01, UHS-I
- Supports S.M.A.R.T. function
- Supports Early Move
- Built-in ECC (Error Correction Code) and Wear Leveling
- Support ESD IEC 61000-4-2

Specifications



Interface (connector)	SD flash card connector
Form Factor	SDXC/SDHC flash card
Flash Type	SuperMLC
Capacity(GB)	SDXC220: 64GB / 128GB SDHC220: 32GB
Dimensions(mm)	24mm × 32mm × 2.1mm (0.95" x 1.26" x 0.08")
Max. R/W Performance(MB/s)(Vary by density)	Read: 95MB/s, Write: 80MB/s
Op. Voltage(V)	2.7V~3.6V
Power Consumption(W)	0.72W
Op. Temp.(°C)	-25°C~85°C
Storage Temp.(°C)	-40°C~85°C

Due to the complexity and variety of industrial applications, Transcend cannot guarantee 100% compatibility with all platforms and under all scenarios.

For special applications and environments, it is strongly suggested to contact Transcend beforehand for clarification.