



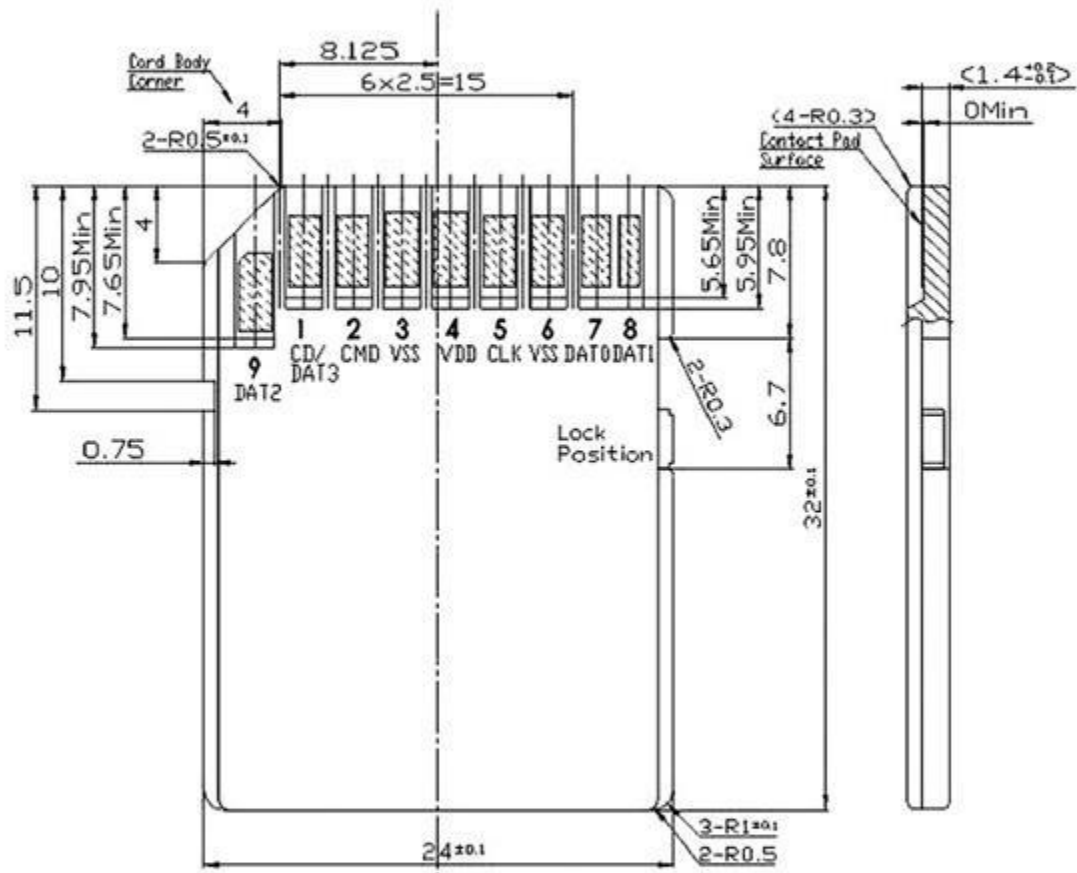
Industrial Temp SD100I SD Card

Featuring excellent durability and operating temperature flexibility, Transcend's Industrial Temp SD100I cards are ideal for demanding industrial applications such as POS terminals and portable devices equipped with an SD memory card slot.

Features

- RoHS compliant product
- Compatible with SD Specification Ver. 3.01 (Not compatible with UHS-I specification)
- Mechanical Write Protection Switch
- Built-in ECC, Wear leveling and power failure protection functions
- Support SD command class 0,2,4,5,7,8
- Support ESD IEC 61000-4-2
- Card Lid material: PC + ABS

Specifications



Interface (connector)	SD flash card connector
Form Factor	SD flash card
Dimensions	24mm × 32mm × 2.1mm
Flash Type	SLC
Capacity	128MB / 256MB / 512MB / 1GB / 2GB
Max. R/W Performance* (Vary by density)	Read: 24MB/s, Write: 12.5MB/s
Operating Voltage	2.7V~3.6V
Power Consumption	0.72W
Operating Temperature	-40°C~85°C
Storage Temperature	-40°C~85°C

Due to the complexity and variety of industrial applications, Transcend cannot guarantee 100% compatibility with all platforms and under all scenarios.

For special applications and environments, it is strongly suggested to contact Transcend beforehand for clarification.