

## mSATA SSD

---



### SATA III 6Gb/s MSA510 mSATA SSD

Supporting the next-generation Serial ATA interface and built around a powerful controller, Transcend's SATA III 6Gb/s MSA510 mSATA SSDs deliver blazing-fast performance and long-term reliability. The compact mSATA form factor is just one-eighth the size of a standard 2.5" SSD, making it perfect for use in space-constricted portable devices such as ultrabooks, tablet PCs, and slim servers.

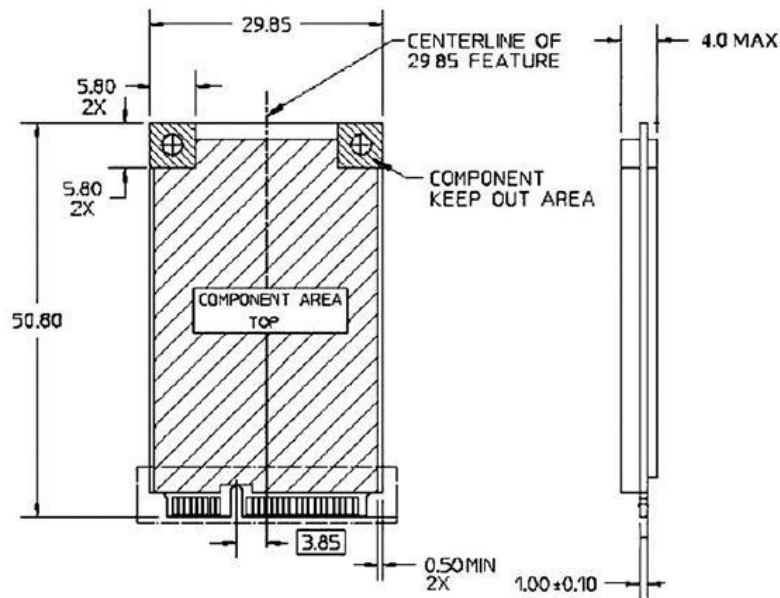
---

## Features

- RoHS compliant
- Advanced Global Wear-leveling and Block management for reliability
- Built-in ECC (Error Correction Code) functionality
- DDR3 DRAM cache
- Supports Advanced Garbage Collection, Enhanced S.M.A.R.T. function, Security Command, and Device Sleep Mode (DevSleep)
- SuperMLC NAND Flash

---

## Specifications



Interface (connector)	SATA III 6Gb/s (mSATA 52-pin)
Form Factor	MO-300
Flash Type	SuperMLC
Capacity(GB)	8GB / 16GB / 32GB / 64GB
Max. Performance (Vary by density)	Read: 570MB/s, Write: 320MB/s
Op. Voltage(V)	3.3V±5%
Power Consumption (W)	2.24W (Active), 0.33W (Idle)
Op. Temp.(°C)	0°C~70°C
Storage Temp.(°C)	-40°C~85°C
Humidity(%)	0%~95%

Due to the complexity and variety of industrial applications, Transcend cannot guarantee 100% compatibility with all platforms and under all scenarios.

For special applications and environments, it is strongly suggested to contact Transcend beforehand for clarification.