

# INDUSTRIAL SD CARD



## FEATURES

- Support static and global wear leveling algorithm
- S.M.A.R.T. & i-S.M.A.R.T. Supported
- Intelligent system for error recovery
- Excellent data transfer speed
- Enhanced power cycling

R: 20MB  
W: 16MB

S.M.A.R.T

Wear  
Leveling

SPI Mode  
Support

ECC  
Engine

Enhanced  
Power Cycling

## Specifications

Interface	9 pin SD standard
Flash Type	SLC (Single Level Cell)
Density	128MB~ 16GB
Transfer Mode	SD and SPI mode
Sustained R/W Performance	Read : 20 MB/sec (max.) Write : 16 MB/sec (max.)

## Environmental

DC Input	2.7V to 3.6V
Power consumption (Max.)	Read: 40 mA Write: 60 mA Idle: 180 $\mu$ A
Operating Temperature	0°C~+70°C (Standard Grade) -40°C~+85°C (Industrial Grade)
Storage Temperature	-55°C~+95°C
Humidity	Relative Humidity: 10-95%, non-condensing
Flash Endurance	100,000 program/erase cycles
MTBF	> 3,000,000 hours
Certification	CE, FCC, RoHS
Warranty	5 years

## Mechanicals

Dimension (W x L x H)	24mm x 32mm x 2.1mm
Weight	2.1g $\pm$ 0.05g
Vibration	7 Hz to 2K Hz, , 3 axes
Shock	Duration: 0.5ms, 1500G, 3 axes

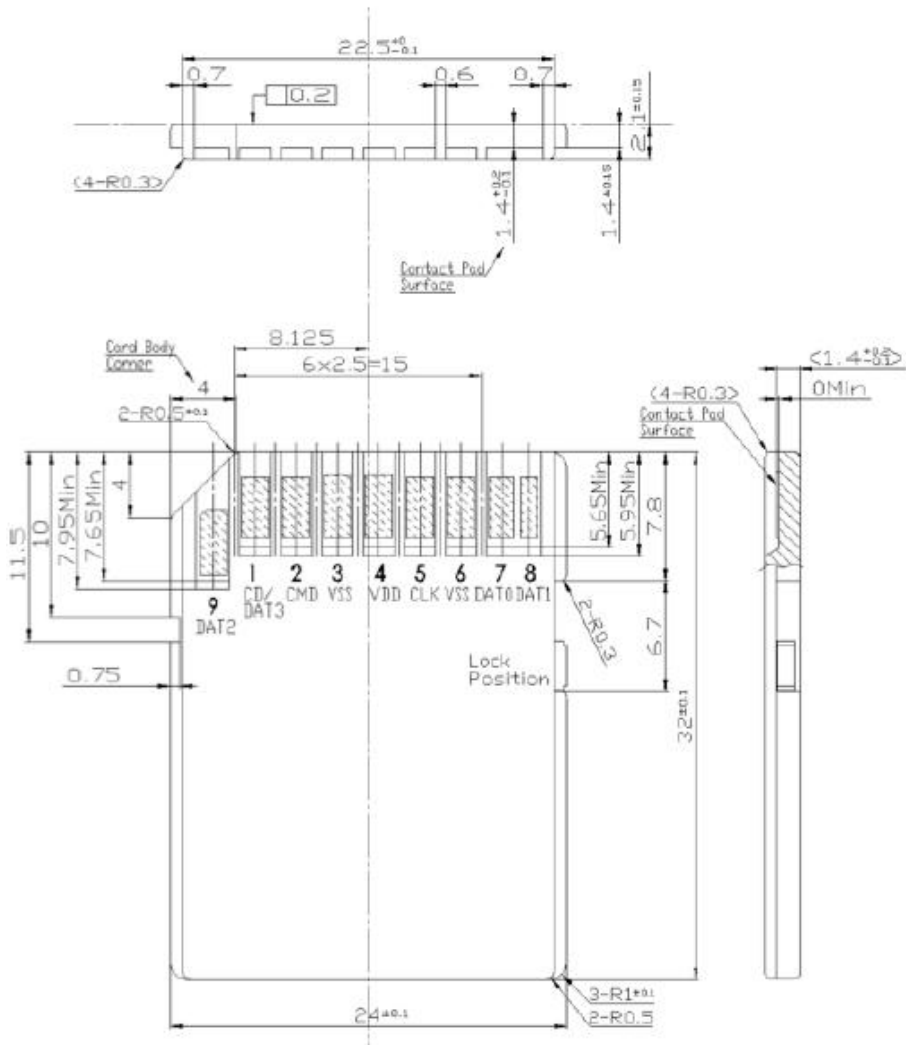
## Health monitoring Tool

S.M.A.R.T.	Supported
i-S.M.A.R.T.	Supported (Utility for Windows)

## Ordering Information

Capacity	Standard Grade	Industrial Grade
128MB	DS2A- <u>128</u> I81 <u>C</u> 1S	DS2A- <u>128</u> I81 <u>W</u> 1S
256MB	DS2A- <u>256</u> I81 <u>C</u> 1S	DS2A- <u>256</u> I81 <u>W</u> 1S
512MB	DS2A- <u>512</u> I81 <u>C</u> 1S	DS2A- <u>512</u> I81 <u>W</u> 1S
1GB	DS2A- <u>01G</u> I81 <u>C</u> 1S	DS2A- <u>01G</u> I81 <u>W</u> 1S
2GB	DS2A- <u>02G</u> I81 <u>C</u> 1S	DS2A- <u>02G</u> I81 <u>W</u> 1S
4GB	DS2A- <u>04G</u> I81 <u>C</u> 1S	DS2A- <u>04G</u> I81 <u>W</u> 1S
8GB	DS2A- <u>08G</u> I81 <u>C</u> 1T	DS2A- <u>08G</u> I81 <u>W</u> 1T
16GB	DS2A- <u>16G</u> I81 <u>C</u> 1T	DS2A- <u>16G</u> I81 <u>W</u> 1T

# Mechanical Dimension



Tolerance ± 0.15

DESIGN • SERVICE • QUALITY • DELIVERY