

# IGCME-1300-R11

PCIe Mini VGA Adapter Card, RoHS

## IEI Scalable Display Solution

The IGCME-1300 is applied to expand one VGA port for the IEI motherboard with a PCIe Mini slot for multiple display applications.

## Features

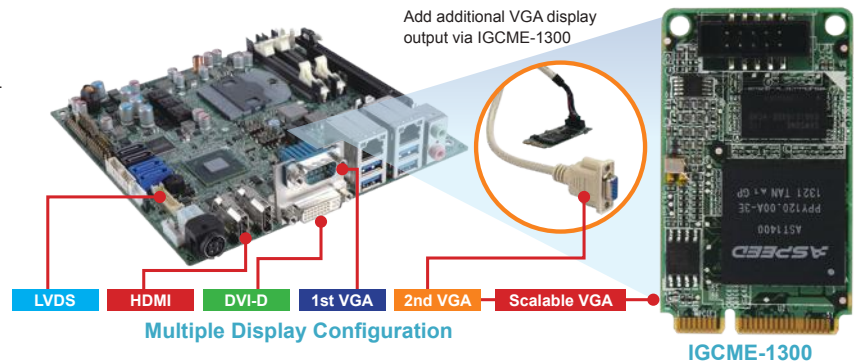
- Support PCIe VGA/2D controller, 1920x1200@60Hz 32bpp
- DDR3 SDRAM supports up to 800 MHz speed
- Compliant with PCI Express Mini specification 1.2

## Specifications

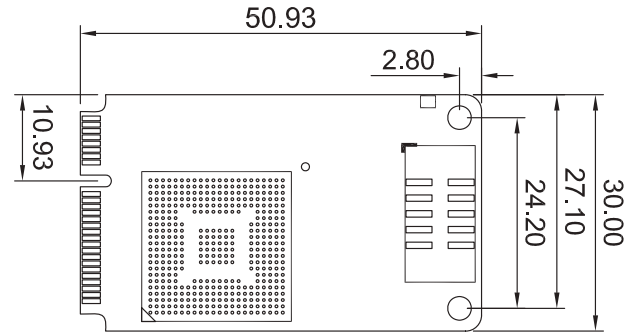
- ◆ Form Factor  
PCI Express Mini card
- ◆ Display Controller  
Aspeed AST1400
- ◆ Internal Connector  
1 x 10-pin (2x5) box header by 2.0mm pitch
- ◆ Compatible OS  
Win7/Win8/Server 2003/Server 2008/Server 2012  
Linux kernel version 2.6.32 above
- ◆ Power Supply  
On-board 3.3V
- ◆ Operating Temperature  
-10°C ~ 60°C
- ◆ Operating Humidity  
5% ~ 95%, non-condensing
- ◆ Dimensions (LxW)  
50mm x 30mm
- ◆ Weight  
70g
- ◆ CE/FCC compliant

## Packing List

1 x IGCME-1300 PCIe Mini VGA adapter card	1 x QIG
VGA cable, 600 mm length (Pitch=2.0mm) (P/N: 32003-001500-100-RS)	



## Dimensions (mm)

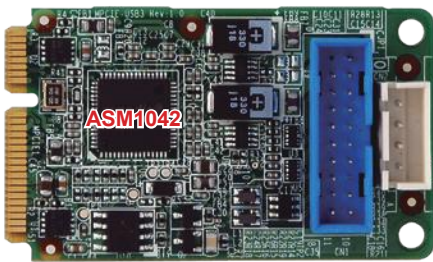


## Ordering Information

Part No.	Description
IGCME-1300-R11	PCIe Mini VGA adapter card, RoHS

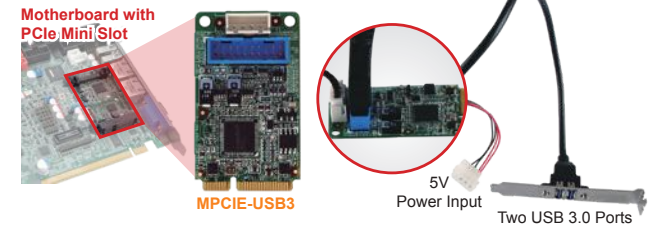
# MPCIE-USB3

PCIe Mini USB 3.0 Adapter Card, RoHS



## IEI USB 3.0 Expanded Solution

The MPCIE is applied to add additional super speed USB 3.0 ports for the motherboard with a PCIe Mini slot.



## Specifications

- ◆ Form Factor  
PCI Express Mini card
- ◆ USB 3.0 Controller  
Asmedia ASM1042A
- ◆ Internal Connector  
1 x 20-pin (2x10) box header
- ◆ Power Jack  
1 x 4-pin box header
- ◆ Compatible OS  
Windows® XP/Server 2003/Server 2008/Vista/7/8.1/10  
Linux kernel version 2.6.32 above
- ◆ Operating Temperature  
-10°C ~ 60°C
- ◆ Operating Humidity  
5% ~ 95%, non-condensing
- ◆ Dimensions (LxW)  
50 mm x 30 mm
- ◆ Weight  
70g
- ◆ CE/FCC compliant

## Packing List

1 x MPCIE-USB3 PCIe Mini USB 3.0 adapter card	
1 x Dual USB 3.0 type A port cable with bracket	
1 x Power cable	1 x QIG

## Ordering Information

Part No.	Description
MPCIE-USB3-R11	PCIe Mini USB 3.0 adapter card, RoHS
19800-010500-200-RS	Dual USB 3.0 type A port cable with bracket

## Features

- Supports two external USB 3.0 type A ports
- USB 3.0 provides up to 5Gbps of transferring rate
- Backward compatible with USB 2.0 and USB 1.0/1.1 devices
- Fully compliant with USB 3.0 rev 1.0 specifications and Intel® xHCI rev 0.96 specifications, with transfer rates up to 5Gbps
- Compliant with PCI Express Mini specification 1.2

## Dimensions (mm)

