

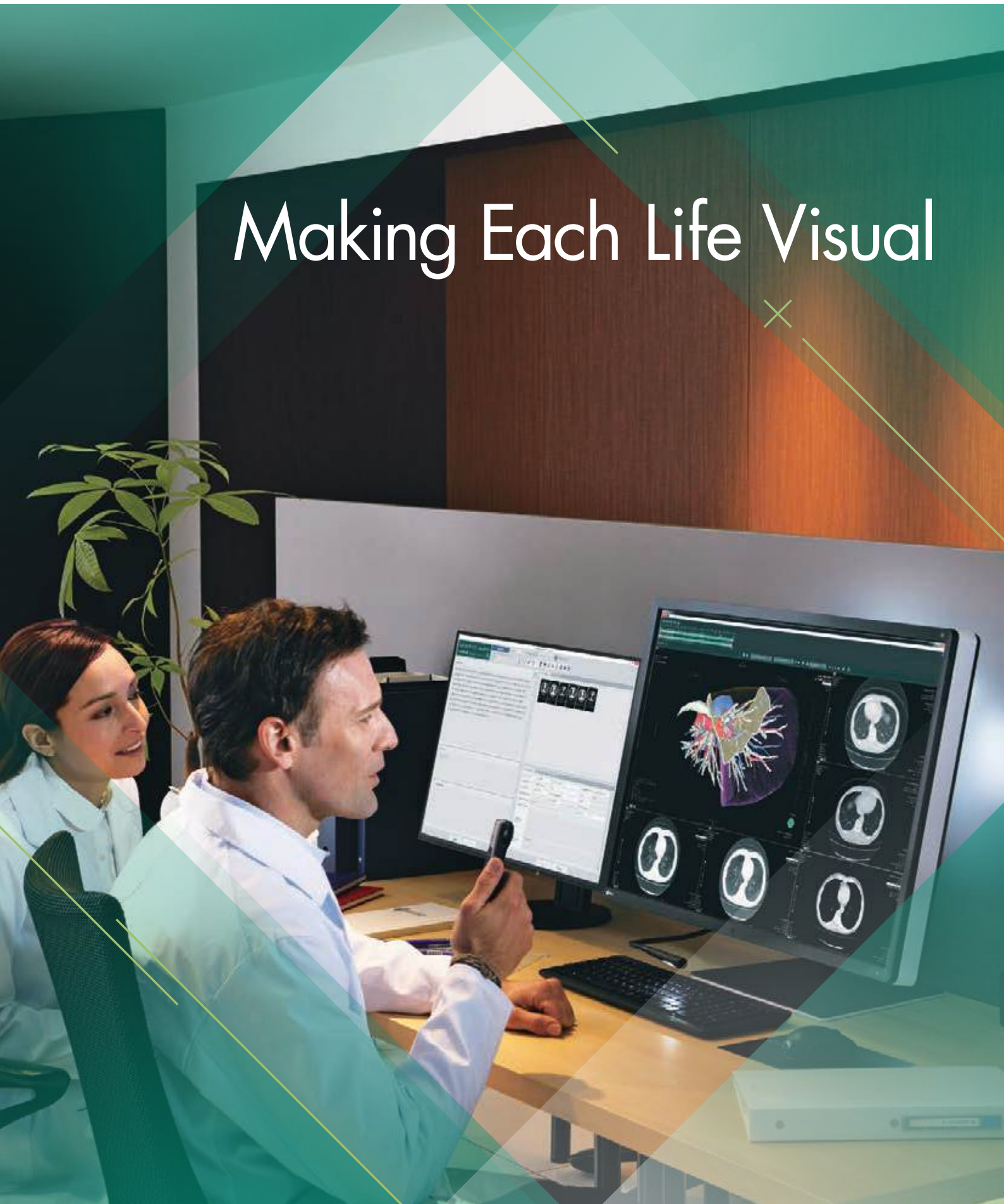


Medical Monitor Solutions

RadiForce®

2019-2020

Making Each Life Visual



Making Each Life Visual

Every life is unique. Every person's medical treatment should be tailored to meet their individual needs.

In the age of precision medicine, the possibilities offered by biotechnologies, artificial intelligence, and information technology open up completely new avenues for diagnosis, prevention, and treatment.

Precision requires comprehensive information. Collecting, linking, and analyzing data, as well as recording, storing, and evaluating image data therefore represents a critical resource for modern medical practices.

Faster treatment success, better quality of life: Technical innovation has an immediate impact on the medical processes in hospitals and operating rooms. Which is why we employ all of our experience and work together with highly qualified medical teams to produce reliable systems for processing image data in the age of precision medicine.

Our knowledge is in the service of better health.
Every life is worth it.

Making Each Life Visual.



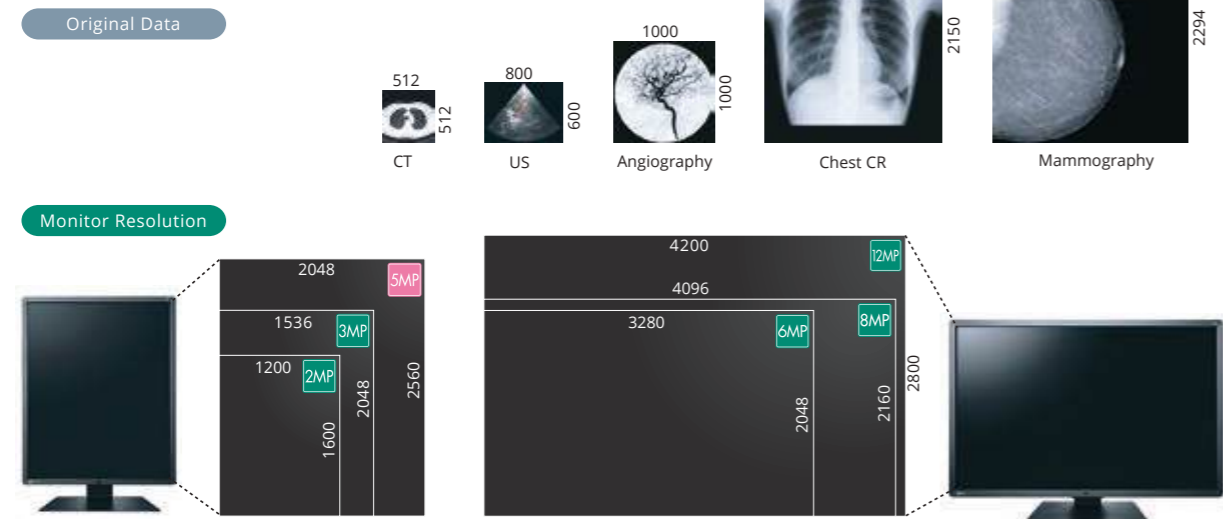
Medical Monitor Solutions RadiForce®

RadiForce specially designed 1 to 12 megapixel monochrome and color monitors take full account of medical institutions' need for different types of monitors with DICOM® Part 14 standard calibration and high-performance capabilities required for precise diagnoses.



View at the Appropriate Resolution

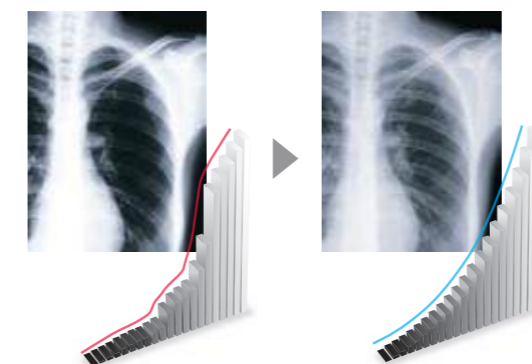
Each modality varies in its display of medical images with regards to size and information volume. RadiForce monitors come in a range of resolutions for displaying images appropriate for each modality.



Make the Precise Diagnosis

EIZO carefully measures and sets each grayscale tone for compliance with DICOM Part 14. Furthermore, at startup or upon wakeup, the EIZO patented drift correction function quickly stabilizes the brightness level and compensates the brightness fluctuations caused by the ambient temperature and the passage of time, allowing medical images to be faithfully reproduced with stable brightness and grayscale.

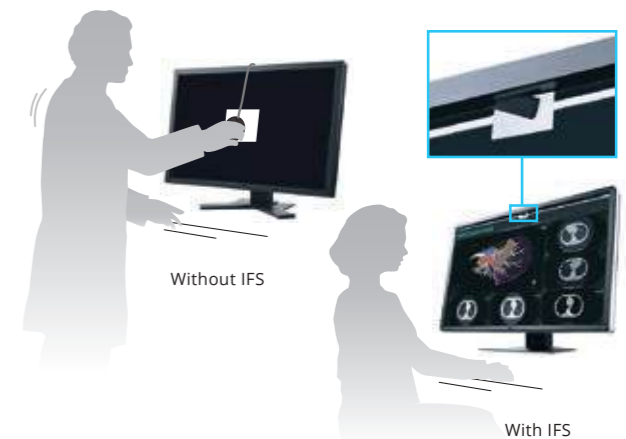
MS236WT features a DICOM preset mode for optimal medical image viewing.



Manage Effortless Quality Control

An Integrated Front Sensor (IFS) housed within the front bezel measures brightness and grayscale tones and calibrates to the DICOM Part 14 standard. The hands-free IFS performs quality control tasks and does not interfere with the viewing area while in use. This dramatically cuts the workload and maintenance costs needed for maintaining monitor quality control.

All models except the MX242W, MX194, and MS236WT.





Uniformity Across the Screen

The Digital Uniformity Equalizer (DUE) function helps to even out fluctuations in brightness and chroma on different parts of the screen to provide smoother images, a quality typically difficult to attain due to the characteristics of LCD monitors.

All models except the MS236WT.



Without DUE



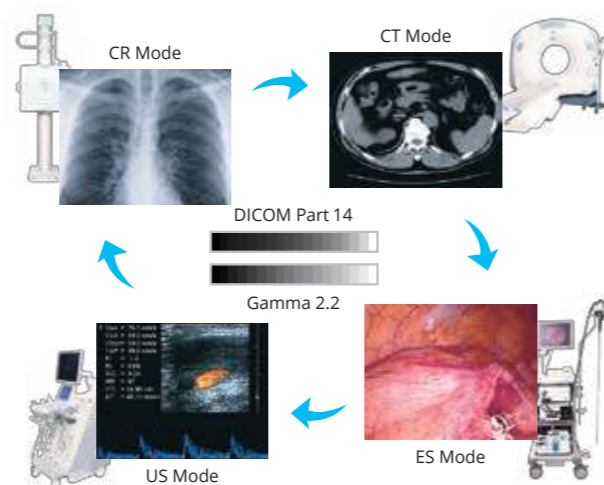
With DUE

Image is for illustrative purposes only. Actual results will vary depending on model and environment.

Select the Ideal Mode for Modalities

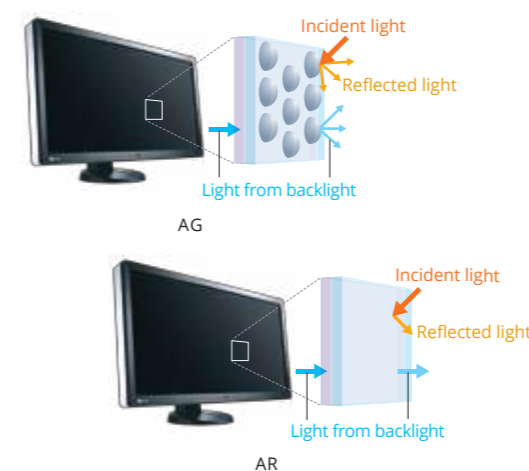
The CAL Switch function allows you to choose various modes for different modalities such as CR, CT, and endoscopy. It can be conveniently accessed using the monitor's front panel buttons to easily switch to optimal image viewing conditions.

Number or type of the modes vary by model. Check the specifications on pages 20 - 23.



Variations for Specific User Needs

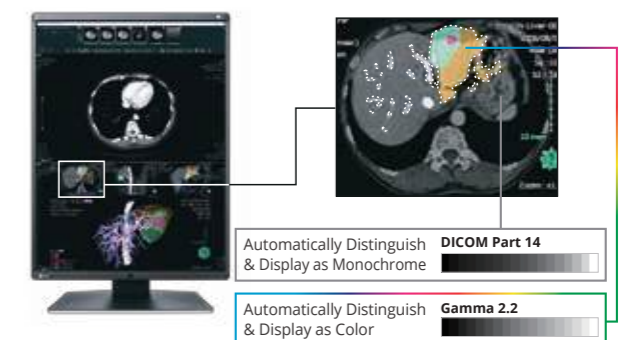
EIZO offers anti-glare (AG) and anti-reflection (AR) screen variations to suit user environments. AG treatment is ideal for exceptionally bright environments and drastically reduces glare from ambient lighting. AR treatment is ideal for moderately-lit environments to reduce mild screen glare while maintaining crisp text and images.



Display Both Monochrome and Color

The Hybrid Gamma PXL function automatically creates a hybrid display where each pixel has optimum grayscale. As a result, monochrome images such as x-ray, MRI and CT are displayed in the ideal DICOM Part 14 grayscale, while color images such as ultrasound and endoscopy are reproduced corresponding to Gamma 2.2. This improves the efficiency of viewing both monochrome and color images together on the one screen.

Check the specifications on pages 20 - 23 for availability.

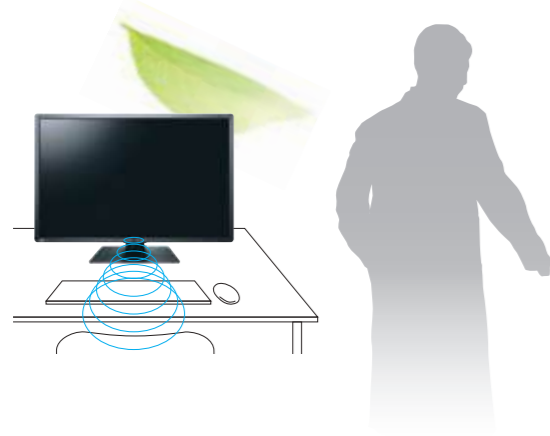




Conserve Energy While Away

The presence sensor equipped with some models prompts the monitor to switch to power save mode when it detects you are away, and then resumes normal operation when you return. This ensures that the monitor conserves power when it is not in use, uniting convenience with savings.

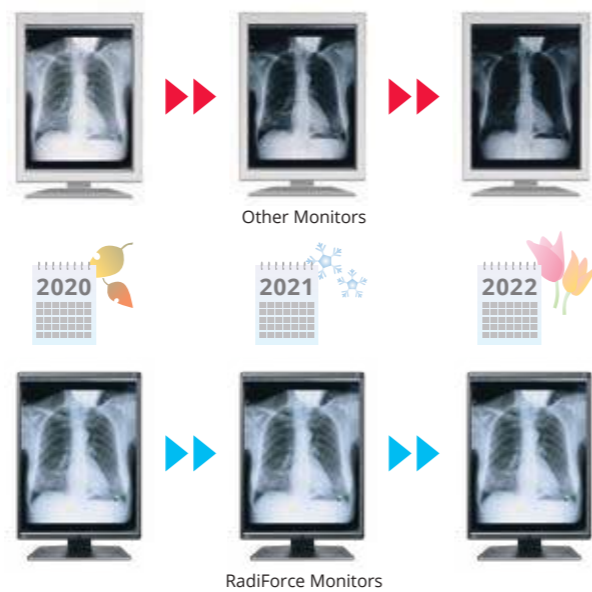
All models except RX1270 and MX216.



Stay Confident with Stable Brightness

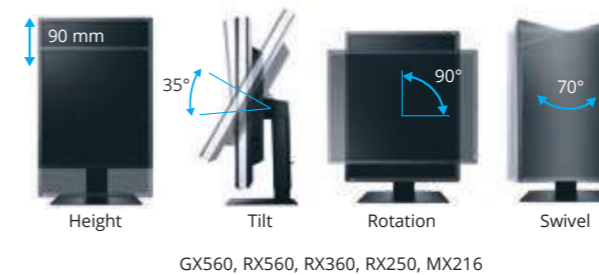
EIZO's confidence in its product quality extends to brightness stability which is also covered during the usage time specified in the warranty.

All models except the MS236WT.

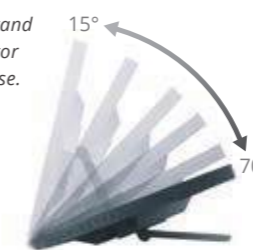


Improve Operability

EIZO's highly versatile stand offers tilt, swivel, and a wide height adjustment range, enabling you to use the monitor with greater comfort.



MS236WT comes with a stand that lets you tilt the monitor back for easy touch pen use.



Effortless Installation

EIZO, in collaboration with business partners, verifies the compatibility of healthcare workstations and desktop PCs with EIZO monitors. With our years of experience and know-how, we undertake professional testing on new workstations and PCs as soon as they are released. In the healthcare field where reliability is everything, EIZO is providing the assurance needed for effortless installation.

We verify aspects such as:

- ✔ Stable operation with workstations/PCs
- ✔ Image quality that can display DICOM medical images



RadiForce® Multi-Series

With advances in medical imaging technology over the years, hospitals are now handling a wider variety and larger volume of image data. The multi-modality approach of RadiForce super high-resolution diagnostic monitors allows a variety of images to be displayed on a single screen — an essential step forward for medicine.



12MP RX1270
78.4 cm (30.9") Color LCD Monitor



8MP RX850
79 cm (31.1") Color LCD Monitor



6MP RX660
76 cm (30.0") Color LCD Monitor

Multi-Modality Readiness

Multi-modality monitors are capable of displaying images to suit a number of modalities such as CR, DR, MRI, CT, and ultrasound. With multi-modality support, you can increase work efficiency with the ability to view numerous medical images on one screen with exceptional accuracy.



Seamlessly View Images

RadiForce multi-modality monitors allow you to view images side by side without the obtrusive bezels typically found in a multi-monitor setup. This prevents the eye from being disrupted when moving between two screens for reader efficiency.



Evolve Your Image Reading

As more image modalities become digitalized, radiologists are viewing an increasing amount of information on their screens. EIZO's unique Work-and-Flow technology alleviates the complexity of the imaging workflow with new functions developed with the radiologist in mind. Users can take advantage of Work-and-Flow features with the RadiForce monitors and bundled RadiCS LE software.

Work-and-Flow



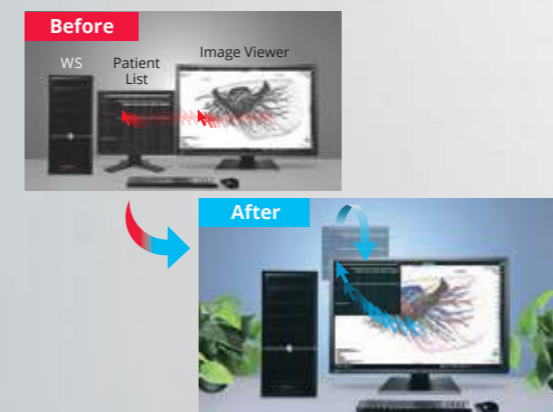
See how EIZO's unique Work-and-Flow function can save you time and space.
www.eizoglobal.com/i/workandflow/

Quick Referencing

The Hide-and-Seek function enables users to easily hide the PinP (Picture in Picture) window not currently in use and reopen it as needed by moving the mouse cursor to the edge of the screen. This eliminates the need for an extra monitor while still allowing quick and efficient viewing of reports, patient charts, and other information.



Check the specifications on pages 20 - 23 for availability.

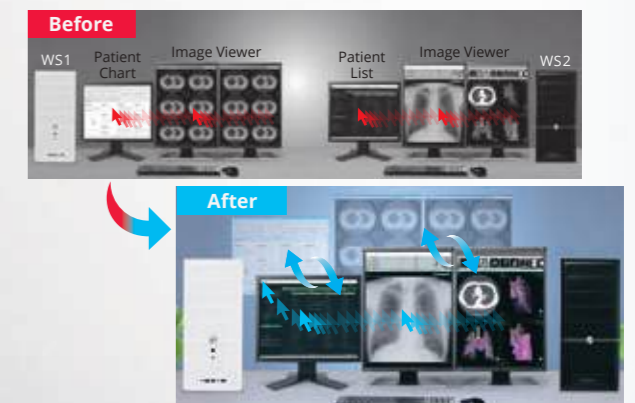


Barrier-Free Workstyle

With the Switch-and-Go function, you can operate two different workstations at the same time with a single mouse and keyboard. Work across several monitors with intuitive cursor movement or switch signals between workstations as needed without changing your mouse or keyboard each time. This makes it possible to reduce the number of monitors in the workflow and improves work efficiency.



Check the specifications on pages 20 - 23 for availability.



RadiForce® Mammo-Series

It is vital in the process of early breast cancer detection that monitors display accurate and consistent quality images. EIZO provides optimum diagnosis confidence with distinctive versions of the RadiForce Mammo-Series breast imaging monitors for displaying breast screening images.



12MP RX1270
78.4 cm (30.9") Color LCD Monitor

MammoDuo integrates two 5 megapixel monitors side by side on a specifically designed stand.

GX560 MammoDuo RX560 MammoDuo

With the world's narrowest bezel of 7.5 mm on a 5 megapixel monitor, two monitors side by side have a combined bezel width of only 15 mm. Furthermore the bezel is only 2.5 mm thick to help your eyes swiftly move from one monitor to another.



5MP 5MP RX560-MD
54.1 cm (21.3") Color LCD Monitors with Dual Screen Configuration

5MP RX560
54.1 cm (21.3") Color LCD Monitor



5MP 5MP GX560-MD
54.1 cm (21.3") Monochrome LCD Monitors with Dual Screen Configuration

5MP GX560
54.1 cm (21.3") Monochrome LCD Monitor

Work-and-Flow



Focus only on an important area of interest with EIZO's unique function that makes it easier to concentrate on interpreting images.

www.eizoglobal.com/ii/workandflow2/

Quick and Easy Focus

With the Point-and-Focus function, you can quickly select and focus areas of concern with just your mouse and keyboard. Change the brightness and grayscale tones of certain points on the screen to make interpretation easier.

Check the specifications on pages 20 - 23 for availability.



Point-and-Focus



All-in-One Breast Imaging

The RadiForce RX1270 creates the perfect balance between comfort and functionality in reading rooms. With its 12 megapixel (4200 x 2800) resolution and compact 30.9-inch size, you can comfortably view several breast images side by side on a single screen. Furthermore, the monitor comes with a rear light which gently illuminates the wall behind, creating the ideal ambient lighting for improved reading accuracy.



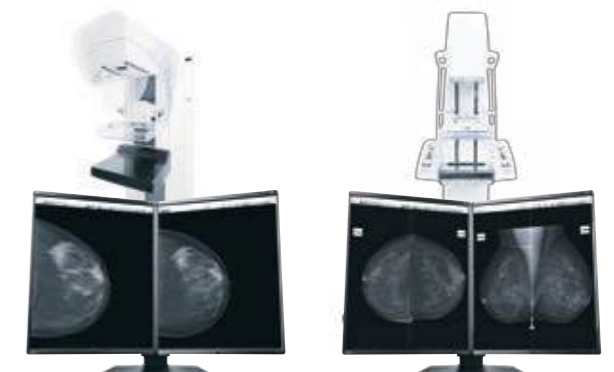
Full Color Support

As the world's first medical monitor with an LTPS (low temperature polysilicon) panel, the RX560 achieves a maximum brightness of 1100 cd/m² and a contrast ratio of 1500:1 similar to that of monochrome monitors. This ensures that with a single screen, monochrome images such as breast tomosynthesis and mammography are displayed accurately alongside color images such as MRI, CT, ultrasound, pathology, and biopsies to accurately examine breast tissue.



Optimum Breast Screening

The 5 megapixel (2048 x 2560) GX560 adopts an LTPS (low temperature polysilicon) panel with a maximum brightness of 2500 cd/m² and a pixel pitch of 0.165 mm. It reproduces large volume mammography images accurately with minimal thinning and patchiness, and is suitable for distinguishing spiculated masses and the delicate shadows of calcifications. Furthermore, 12 millisecond response time allows smooth and efficient viewing of breast tomosynthesis.



Breast Tomosynthesis

Mammography

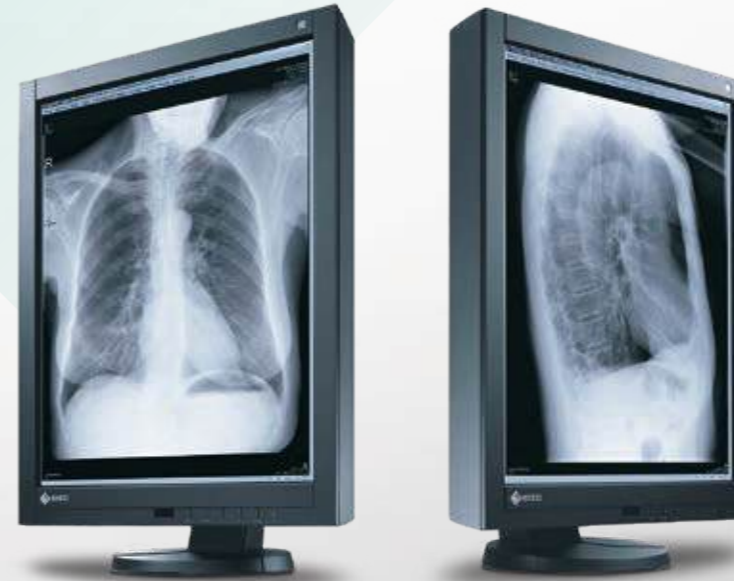
RadiForce® G&R-Series

High-resolution 3 megapixel monitors are capable of fully displaying chest X-ray images. 2 megapixel monitors are ideal for a wide variety of tasks from viewing CR, DR, MRI, and CT images to use as a PACS / HIS / RIS terminal.



3MP RX360
54.1 cm (21.3") Color LCD Monitor

2MP RX250
54 cm (21.3") Color LCD Monitor

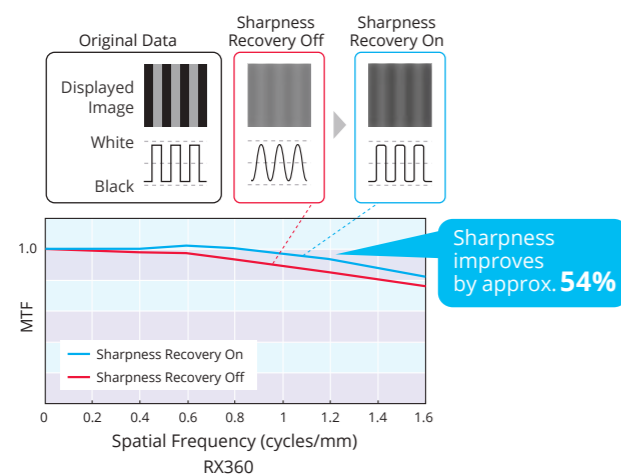


3MP GX340
54 cm (21.3") Monochrome LCD Monitor

2MP GX240
54 cm (21.3") Monochrome LCD Monitor

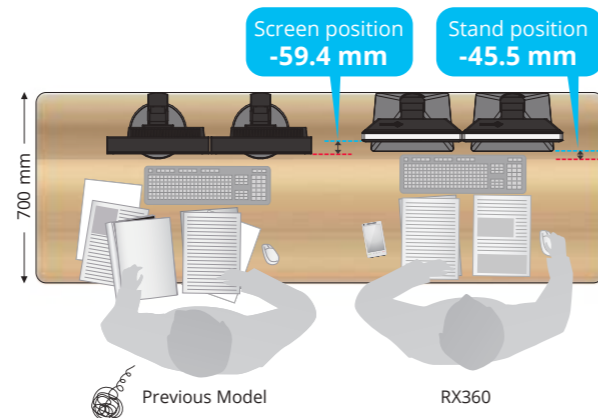
Achieve Clarity True to the Source Data

A medical monitor needs to be capable of high brightness in order to meet performance standards. However, in order to achieve high brightness in an LCD panel, the pixel aperture ratio has to be increased. This causes an unavoidable decline in sharpness. With EIZO's unique Sharpness Recovery technology installed on RX360 and RX250, the decrease in sharpness (MTF) is restored. This allows you to display an image safely on the monitor that is true to the original source data, even at high brightness levels.



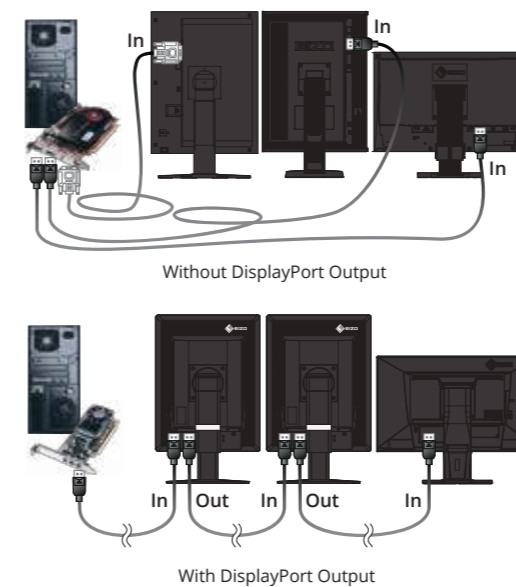
Create a Free-Flowing Work Environment

Compared to the RX340, the RX360 has been reduced in width, height, and depth by 35 mm, 39 mm, and 46 mm respectively – a total of 32% less space. With approximately 70% reduction in bezel width a freeflowing multi-monitor work environment can be made.



Hassle-Free Multi-Monitor Configuration

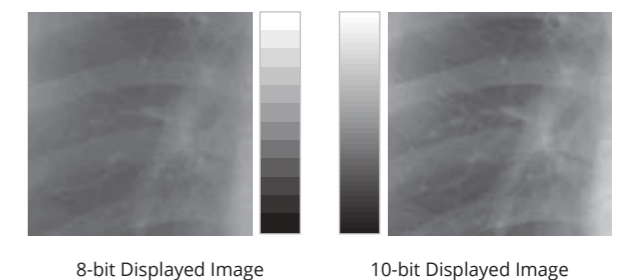
Utilizing the DisplayPort output connection of RX360 and RX250, you can drive several monitors in a daisy chain sequence. This allows you to configure a multi-monitor setup without the complicated hassle of excessive cabling.



Discern Subtleties in Grayscale Tones

10-bit (1,024 tones) simultaneous grayscale display reproduces monochrome images with a high bit-depth for a sharper, clearer result.

10-bit graphics board and 10-bit viewer software needed for 10-bit display.



RadiForce® MX-Series

Superior cost performance monitors are ideal for viewing patient charts with MRI and CT medical images in DICOM Part 14 standard. In addition, they are available in widescreen and square formats in various resolutions to meet the diverse needs of hospitals and clinics.



8MP MX315W
79 cm (31.1") Color LCD Monitor



2MP MX216
54 cm (21.3") Color LCD Monitor



2.3MP MX242W
61 cm (24.1") Color LCD Monitor



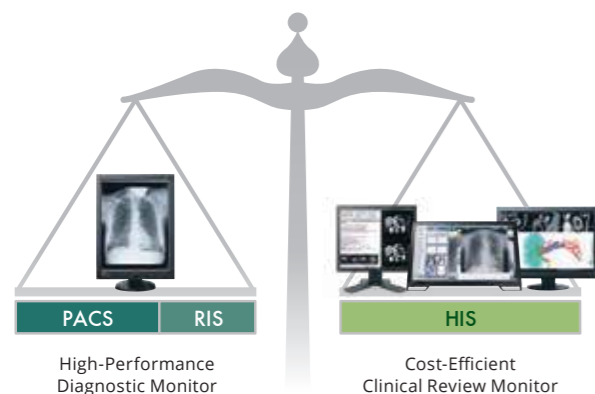
1MP MX194
48.1 cm (19.0") Color LCD Monitor



2MP MS236WT
58 cm (23.0") Multitouch Color LCD Monitor

Stay Cost Efficient

For environments using clinical record applications for image referencing, more cost-efficient solutions are available with the MX-Series, so you can continue to review medical images optimized for DICOM Part 14 while ensuring higher savings.



Improved Workflow with High Resolution

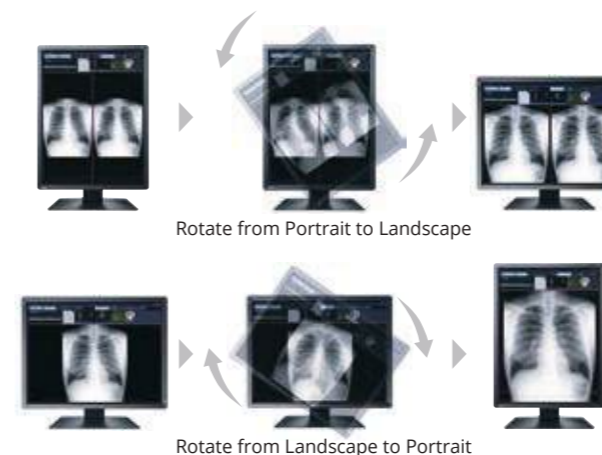
The MX315W offers the highest resolution from the MX-Series, displaying 8 megapixels of information (4096 × 2160 pixels) on the large 31.1-inch screen. By utilizing the MX315W's increased viewing space and freedom of layout, it is possible to display various inspection images side by side, such as CT and MRI images in tiled format. This will allow for the comparison of old and current scans, ultimately improving efficiency.



Accommodate the Image

When you configure your monitor after installing the included RadiCS LE quality control software, you can link the Image Rotation Plus function with the built-in gravity sensor, so that the screen will automatically switch to either portrait or landscape mode, based on the orientation of the monitor.

Available with the MX242W and MX216. A graphics board that supports the Image Rotation Plus function is required.



Smooth and Detailed Handwriting

The MS236WT accepts touch input from a bare finger or commercially-available stylus pen, so small and detailed letters can easily be written into a medical record.



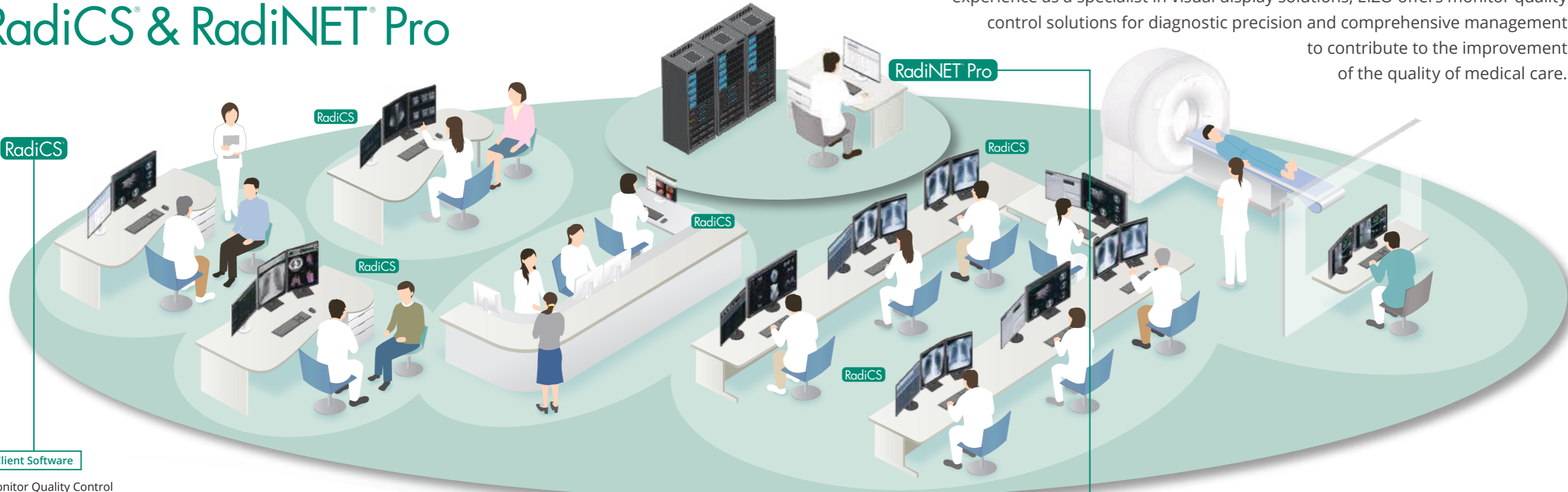
The MS236WT is equipped with palm rejection which allows you to rest your hand directly on the screen without causing any unintended touch input, so that you can focus on your writing.

Palm rejection minimum activation area is 2 × 2 cm.



Monitor Quality Control Solutions RadiCS® & RadiNET® Pro

With filmless imaging spreading in medicine, maintaining the quality of monitors for medical imaging is becoming increasingly important. With the know-how and experience as a specialist in visual display solutions, EIZO offers monitor quality control solutions for diagnostic precision and comprehensive management to contribute to the improvement of the quality of medical care.



Client Software

Monitor Quality Control Software & Calibration Sensor
RadiCS® UX2

Maintain Quality Control of Individual Monitors

Ensuring that the quality control of each client monitor complies with important medical standards, from calibration to acceptance and constancy tests to history and asset management, requires technical know-how and experience. EIZO offers software and sensors that make quality control efficient and user-friendly.



RadiNET Pro Web Hosting

Hosting Service

Network QC Management Server Provider
RadiNET Pro Web Hosting

Expert Quality Control Services for Reassurance

Setting up and maintaining a server for monitor quality control operations is a significant investment. EIZO will setup and host the web server for you for efficient centralized control of all connected monitors.



Server Software

Network QC Management Software
RadiNET® Pro

Maintain Quality Control for a Large Number of Monitors

Maintaining quality control of a large number of monitors in hospitals calls for a lot of effort. EIZO offers centralized management of client monitors connected to the hospital network, providing increased efficiency of monitor QC operations.



SPECIFICATIONS



		12MP RadiForce RX1270	8MP RadiForce RX850	6MP RadiForce RX660	5MP/5MP RadiForce RX560-MD	5MP RadiForce RX560	5MP/5MP RadiForce GX560-MD	5MP RadiForce GX560	
Model Variations		RX1270-BK: Anti-Glare coating, with stand, black RX1270-ARBK: Anti-Reflection coating, with stand, black	RX850-BK: Anti-Glare coating, with stand, black RX850-ARBK: Anti-Reflection coating, with stand, black	RX660-BK: Anti-Glare coating, with stand, black RX660-ARBK: Anti-Reflection coating, with stand, black	RX560-BK-MD: Anti-Glare coating, two screens, with dual stand, black RX560-ARBK-MD: Anti-Reflection coating, two screens, with dual stand, black RX560-BK: Anti-Glare coating, one screen, with stand, black RX560-ARBK: Anti-Reflection coating, one screen, with stand, black		GX560-BK-MD: Anti-Glare coating, two screens, with dual stand, black GX560-ARBK-MD: Anti-Reflection coating, two screens, with dual stand, black GX560-BK: Anti-Glare coating, one screen, with stand, black GX560-ARBK: Anti-Reflection coating, one screen, with stand, black		
Panel	Type	Color (IPS)	Color (IPS)	Color (IPS)	Color (IPS)		Monochrome (IPS)		
	Backlight	LED	LED	LED	LED		LED		
	Size	78.4 cm / 30.9"	79 cm / 31.1"	76 cm / 30.0"	54.1 cm / 21.3"		54.1 cm / 21.3"		
	Native Resolution	4200 x 2800 (3:2 aspect ratio)	4096 x 2160 (17:9 aspect ratio)	3280 x 2048 (16:10 aspect ratio)	2048 x 2560 (4:5 aspect ratio)		2048 x 2560 (4:5 aspect ratio)		
	Viewable Image Size (H x V)	652.7 x 435.1 mm	697.9 x 368.0 mm	645.5 x 403.0 mm	337.9 x 422.4 mm		337.9 x 422.4 mm		
	Pixel Pitch	0.1554 x 0.1554 mm	0.1704 x 0.1704 mm	0.1968 x 0.1968 mm	0.165 x 0.165 mm		0.165 x 0.165 mm		
	Display Colors / Grayscale Tones	10-bit (DisplayPort): 1.07 billion from a palette of 543 billion (13-bit) colors 8-bit: 16.77 million from a palette of 543 billion (13-bit) colors	10-bit (DisplayPort): 1.07 billion from a palette of 68 billion (12-bit) colors 8-bit: 16.77 million from a palette of 68 billion (12-bit) colors	10-bit (DisplayPort): 1.07 billion from a palette of 543 billion (13-bit) colors 8-bit: 16.77 million from a palette of 543 billion (13-bit) colors	10-bit (DisplayPort): 1.07 billion from a palette of 543 billion (13-bit) colors 8-bit: 16.77 million from a palette of 543 billion (13-bit) colors		10-bit (DisplayPort): 1,024 from a palette of 16,369 (14-bit) tones 8-bit: 256 from a palette of 16,369 (14-bit) tones		
	Viewing Angles (H / V, typical)	178° / 178°	178° / 178°	176° / 176°	178° / 178°		178° / 178°		
	Brightness (typical)	1200 cd/m ²	850 cd/m ²	1000 cd/m ²	1100 cd/m ²		2500 cd/m ²		
	Recommended Brightness for Calibration	500 cd/m ²	500 cd/m ²	500 cd/m ²	500 cd/m ²		1000 cd/m ² , 600 cd/m ²		
Contrast Ratio (typical)	1500:1	1450:1	1500:1	1500:1		1700:1			
Response Time (typical)	12 ms (black-white-black)	20 ms (black-white-black)	25 ms (black-white-black)	12 ms (black-white-black)		12 ms (black-white-black)			
Video Signals	Input Terminals	DisplayPort x 2, HDMI	DisplayPort x 2, DVI-D (dual link) x 2 (two inputs are required)	DisplayPort x 2, DVI-D (dual link)	DisplayPort, DVI-D (dual link)		DisplayPort x 2, DVI-D (dual link)		
	Output Terminals	—	—	DisplayPort (daisy chain)	DisplayPort (daisy chain)		DisplayPort (daisy chain)		
	Digital Scanning Frequency (H / V)	31 - 175 kHz / 29 - 61 Hz	31 - 140 kHz / 59 - 61 Hz	31 - 127 kHz / 22 - 61 Hz	31 - 135 kHz / 23 - 61 Hz		31 - 135 kHz / 23 - 61 Hz		
USB	Upstream	USB 2.0: Type-B x 2	USB 2.0: Type-B	USB 2.0: Type-B x 2	USB 2.0: Type-B		USB 2.0: Type-B x 2		
	Downstream	USB 2.0: Type-A x 3	USB 2.0: Type-A x 2	USB 2.0: Type-A x 3	USB 2.0: Type-A x 2		USB 2.0: Type-A x 2		
Power	Power Requirements	AC 100 - 240 V: 50 / 60 Hz	AC 100 - 120 V, 200 - 240 V: 50 / 60 Hz	AC 100 - 240 V: 50 / 60 Hz	AC 100 - 240 V: 50 / 60 Hz		AC 100 - 240 V: 50 / 60 Hz		
	Typical Power Consumption	77 W	111 W	93 W	43 W		28 W		
	Maximum Power Consumption	188 W	227 W	190 W	87 W		79 W		
	Power Save Mode	2 W or less	6 W or less	1.6 W or less	1 W or less		1 W or less		
Sensor	Backlight Sensor, Integrated Front Sensor, Ambient Light Sensor		Backlight Sensor, Integrated Front Sensor, Presence Sensor, Ambient Light Sensor	Backlight Sensor, Integrated Front Sensor, Presence Sensor, Ambient Light Sensor	Backlight Sensor, Integrated Front Sensor, Presence Sensor, Ambient Light Sensor		Backlight Sensor, Integrated Front Sensor, Presence Sensor, Ambient Light Sensor		
Features & Functions	Brightness Stabilization	Yes	Yes	Yes	Yes		Yes		
	Digital Uniformity Equalizer	Yes	Yes	Yes	Yes		Yes		
	Hybrid Gamma PXL	Yes	—	Yes	Yes		—		
	Work-and-Flow	Hide-and-Seek, Switch-and-Go, Point-and-Focus	—	Hide-and-Seek, Switch-and-Go, Point-and-Focus	Point-and-Focus		Switch-and-Go, Point-and-Focus		
	Preset Modes	CAL Switch (DICOM, CAL1, CAL2, Custom, sRGB, Text)	CAL Switch (DICOM, Custom, CAL1, CAL2, CAL3, Hybrid-y, sRGB, Text)	CAL Switch (DICOM, CAL1, CAL2, Custom, sRGB, Text)	CAL Switch (DICOM, CAL1, CAL2, Custom, sRGB, Text)		CAL Switch (DICOM, CAL1, CAL2, Text)		
	OSD Languages	English, German, French, Italian, Japanese, Simplified Chinese, Spanish, Swedish, Traditional Chinese	English, German, French, Italian, Japanese, Simplified Chinese, Spanish, Swedish, Traditional Chinese	English, German, French, Italian, Japanese, Simplified Chinese, Spanish, Swedish, Traditional Chinese	English, German, French, Italian, Japanese, Simplified Chinese, Spanish, Swedish, Traditional Chinese		English, German, French, Italian, Japanese, Simplified Chinese, Spanish, Swedish, Traditional Chinese		
Physical Specifications	Net Weight	15.6 kg	22.4 kg (AC adapter included)	14.2 kg	RX560-MD, RX560-AR-MD: 17.3 kg RX560, RX560-AR: 8.1 kg		GX560-MD, GX560-AR-MD: 17.1 kg GX560, GX560-AR: 8 kg		
	Net Weight (Without Stand)	11.5 kg	15.8 kg	10.1 kg	5.3 kg		5.2 kg		
	Hole Spacing (VESA Standard)	100 x 100 mm	100 x 100 mm	100 x 100 mm	100 x 100 mm		100 x 100 mm		
Certifications & Standards ¹		CE (Medical Device), EN60601-1, ANSI/AAMI ES60601-1, CSA C22.2 No. 601-1, IEC60601-1, VCCI-B, FCC-B, CAN ICES-3 (B), RCM, RoHS, China RoHS, WEEE, CCC, EAC	CE (Medical Device), EN60601-1, ANSI/AAMI ES60601-1, CSA C22.2 No. 601-1, IEC60601-1, VCCI-B, FCC-B, CAN ICES-3 (B), RCM, RoHS, China RoHS, WEEE, CCC, EAC	CE (Medical Device), EN60601-1, ANSI/AAMI ES60601-1, CSA C22.2 No. 601-1, IEC60601-1, VCCI-B, FCC-B, CAN ICES-3 (B), RCM, RoHS, China RoHS, WEEE, CCC, EAC	RX560, RX560-AR: CE (Medical Device), EN60601-1, ANSI/AAMI ES60601-1, CSA C22.2 No. 601-1, IEC60601-1, VCCI-B, FCC-B, CAN ICES-3 (B), RCM, RoHS, China RoHS, WEEE, CCC, EAC		GX560, GX560-AR: CE (Medical Device), EN60601-1, ANSI/AAMI ES60601-1, CSA C22.2 No. 601-1, IEC60601-1, VCCI-B, FCC-B, CAN ICES-3 (B), RCM, RoHS, China RoHS, WEEE, CCC, EAC		
FDA ^{1, 2, 3}		Pending: 510(k) Clearance for Breast Tomosynthesis, Mammography, and General Radiography	510(k) Clearance for Breast Tomosynthesis, Mammography, and General Radiography	510(k) Clearance for General Radiography	510(k) Clearance for Breast Tomosynthesis, Mammography, and General Radiography		510(k) Clearance for Breast Tomosynthesis, Mammography, and General Radiography		
Dedicated Software	Monitor Quality Control Software RadiCS	Supported	Supported	Supported	Supported		Supported		
	Signal Cables	DisplayPort (3 m) x 2, HDMI (2 m)	Dual Link DVI-D (3 m) x 2, DisplayPort (3 m) x 2	Dual Link DVI-D (3 m), DisplayPort (3 m) x 2, DisplayPort (0.28 m)	RX560-MD, RX560-AR-MD: Dual Link DVI-D (3 m) x 2, DisplayPort (3 m) x 2, DisplayPort (1 m) RX560, RX560-AR: Dual Link DVI-D (3 m), DisplayPort (3 m)		GX560-MD, GX560-AR-MD: DisplayPort (3 m) x 4, DisplayPort (1 m) GX560, GX560-AR: DisplayPort (3 m) x 2		
Supplied Accessories ⁴	Others	AC power cord (3 m), USB cable (3 m) x 2, cable cover, Utility Disk (RadiCS LE, PDF installation manual), instructions for use	AC power cord (3 m), AC adapter, USB cable (3 m), holder for power cord, Utility Disk (RadiCS LE, PDF instructions for use, PDF installation manual), instructions for use	AC power cord (3 m), USB cable (3 m) x 2, cable cover, Utility Disk (RadiCS LE, PDF installation manual), instructions for use	RX560-MD, RX560-AR-MD: AC power cord (3 m) x 2, USB cable (3 m) x 2, Utility Disk (RadiCS LE, PDF installation manual), instructions for use RX560, RX560-AR: AC power cord (3 m), USB cable (3 m), Utility Disk (RadiCS LE, PDF installation manual), instructions for use		GX560-MD, GX560-AR-MD: AC power cord (3 m) x 2, USB cable (3 m) x 4, Utility Disk (RadiCS LE, PDF installation manual), instructions for use GX560, GX560-AR: AC power cord (3 m), USB cable (3 m) x 2, Utility Disk (RadiCS LE, PDF installation manual), instructions for use		
	Warranty	Five Years	Five Years	Five Years	Five Years		Five Years		
Dimensions (Unit: mm)									
Swivel									

¹ Please contact the EIZO group company or distributor in your country for the latest information.
² Use FDA 510(k) Clearance monitor for diagnosis.
³ General radiography clearance models do not support display of mammography images for diagnosis.
⁴ May vary by country. Please contact EIZO for details.

SPECIFICATIONS



Model Variations		RX360-BK: Anti-Glare coating, with stand, black RX360-ARBK: Anti-Reflection coating, with stand, black	GX340-CL-BK: Clear Base, with stand, black GX340-CL-P-BK: Pairing, with stand, black	RX250-BK: Anti-Glare coating, with stand, black RX250-ARBK: Anti-Reflection coating, with stand, black	GX240-CL-BK: Clear Base, with stand, black GX240-CL-P-BK: Pairing, with stand, black	MX315W-BK: with stand, black	MX242W-BK: with stand, black	MX216-BK: with stand, black	MX194-BK: with stand, black	MS236WT-LGY: with Reclining Stand, gray MS236WT-LBK: with Reclining Stand, black MS236WT-FGY: without stand, gray MS236WT-FBK: without stand, black	
Panel	Type	Color (IPS)	Monochrome (IPS)	Color (IPS)	Monochrome (IPS)	Color (IPS)	Color (IPS)	Color (IPS)	Color (VA)	Color (IPS)	
	Backlight	LED	LED	LED	LED	LED	LED	LED	LED	LED	
	Size	54.1 cm / 21.3"	54 cm / 21.3"	54 cm / 21.3"	54 cm / 21.3"	79 cm / 31.1"	61 cm / 24.1"	54 cm / 21.3"	48.1 cm / 19.0"	58 cm / 23.0"	
	Native Resolution	1536 x 2048 (3:4 aspect ratio)	1536 x 2048 (3:4 aspect ratio)	1200 x 1600 (3:4 aspect ratio)	1200 x 1600 (3:4 aspect ratio)	4096 x 2160 (17:9 aspect ratio)	1920 x 1200 (16:10 aspect ratio)	1200 x 1600 (3:4 aspect ratio)	1280 x 1024 (5:4 aspect ratio)	1920 x 1080 (16:9 aspect ratio)	
	Viewable Image Size (H x V)	324.9 x 433.2 mm	324.8 x 433.1 mm	324.0 x 432.0 mm	324.0 x 432.0 mm	697.9 x 368.0 mm	518.4 x 324.0 mm	324.0 x 432.0 mm	376.3 x 301.0 mm	509.2 x 286.4 mm	
	Pixel Pitch	0.2115 x 0.2115 mm	0.2115 x 0.2115 mm	0.270 x 0.270 mm	0.270 x 0.270 mm	0.1704 x 0.1704 mm	0.270 x 0.270 mm	0.270 x 0.270 mm	0.294 x 0.294 mm	0.265 x 0.265 mm	
	Display Colors / Grayscale Tones	10-bit (DisplayPort): 1.07 billion from a palette of 543 billion (13-bit) colors 8-bit: 16.77 million from a palette of 543 billion (13-bit) colors	10-bit (DisplayPort): 1,024 from a palette of 16,369 (14-bit) tones 8-bit: 256 from a palette of 16,369 (14-bit) tones	10-bit (DisplayPort): 1.07 billion from a palette of 543 billion (13-bit) colors 8-bit: 256 from a palette of 543 billion (13-bit) colors	10-bit (DisplayPort): 1,024 from a palette of 16,369 (14-bit) tones 8-bit: 256 from a palette of 16,369 (14-bit) tones	10-bit (DisplayPort): 1.07 billion from a palette of 543 billion (13-bit) colors 8-bit: 256 from a palette of 543 billion (13-bit) colors	10-bit (DisplayPort): 1.07 billion from a palette of 543 billion (13-bit) colors 8-bit: 16.77 million from a palette of 543 billion (13-bit) colors	10-bit (DisplayPort): 1.07 billion from a palette of 543 billion (13-bit) colors 8-bit: 16.77 million from a palette of 543 billion (13-bit) colors	10-bit (DisplayPort): 1.07 billion from a palette of 543 billion (13-bit) colors 8-bit: 16.77 million from a palette of 543 billion (13-bit) colors	10-bit (DisplayPort): 1.07 billion from a palette of 543 billion (13-bit) colors 8-bit: 16.77 million from a palette of 543 billion (13-bit) colors	8-bit: 16.77 million from a palette of 1.06 billion (10-bit) colors
	Viewing Angles (H / V, typical)	178° / 178°	176° / 176°	178° / 178°	176° / 176°	178° / 178°	178° / 178°	178° / 178°	178° / 178°	178° / 178°	178° / 178°
	Brightness (typical)	1100 cd/m ²	1200 cd/m ²	800 cd/m ²	1200 cd/m ²	450 cd/m ²	350 cd/m ²	500 cd/m ²	350 cd/m ²	260 cd/m ²	
	Recommended Brightness for Calibration	500 cd/m ²	500 cd/m ²	400 cd/m ²	500 cd/m ²	—	—	—	—	—	
Contrast Ratio (typical)	1500:1	1400:1	1400:1	1400:1	1300:1	1000:1	1500:1	2000:1	1000:1		
Response Time (typical)	12 ms (black-white-black)	40 ms (black-white-black)	20 ms (black-white-black)	40 ms (black-white-black)	20 ms (black-white-black)	12 ms (black-white-black)	20 ms (black-white-black)	20 ms (black-white-black)	11 ms (gray-to-gray)		
Touch Panel	Type	—	—	—	—	—	—	—	—	Projected Capacitive	
	Touch Points	—	—	—	—	—	—	—	—	10	
	Surface Treatment	—	—	—	—	—	—	—	—	Anti-Glare coating	
	Communication Protocol	—	—	—	—	—	—	—	—	USB	
	Touch Life	—	—	—	—	—	—	—	—	50 million touches (minimum)	
	Surface Hardness	—	—	—	—	—	—	—	—	5 H	
	Compatible OS	—	—	—	—	—	—	—	—	Windows 10 / 8.1 / 7 (64-bit, 32-bit)	
Video Signals	Input Terminals	DisplayPort x 2, DVI-D (dual link)	DisplayPort, DVI-D (dual link)	DisplayPort, DVI-D	DisplayPort, DVI-D	DisplayPort x 2, DVI-D (dual link)	DisplayPort, DVI-I	DisplayPort, DVI-D	DisplayPort, DVI-D, D-Sub mini 15 pin	DisplayPort (HDCP 1.3), DVI-D (HDCP 1.4), D-Sub mini 15 pin	
	Output Terminals	DisplayPort (daisy chain)	—	DisplayPort (daisy chain)	—	DisplayPort (daisy chain)	—	DisplayPort (daisy chain)	—	—	
	Digital Scanning Frequency (H / V)	31 - 127 kHz / 29 - 61.5 Hz	31 - 127 kHz / 29 - 61.5 Hz	31 - 100 kHz / 59 - 61 Hz	31 - 100 kHz / 59 - 61 Hz	31 - 134 kHz / 14 - 61 Hz	31 - 76 kHz / 59 - 61 Hz	31 - 100 kHz / 59 - 61 Hz	31 - 64 kHz / 59 - 61 Hz	DVI: 31 - 64 kHz / 59 - 61 Hz (VGA Text: 69 - 71 Hz) DisplayPort: 31 - 68 kHz / 59 - 61 Hz (VGA Text: 69 - 71 Hz)	
	Analog Scanning Frequency (H / V)	—	—	—	—	—	26 - 76 kHz / 49 - 71 Hz	—	24.8 - 80 kHz / 50 - 75 Hz	31 - 81 kHz / 55 - 76 Hz	
	Sync Formats	—	—	—	—	—	Separate	—	Separate	Separate	
USB	Upstream	USB 2.0: Type-B x 2	USB 2.0: Type-B	USB 2.0: Type-B	USB 2.0: Type-B	USB 2.0: Type-B x 2	USB 2.0: Type-B	USB 2.0: Type-B	USB 2.0: Type-B	USB 2.0: Type-B	
	Downstream	USB 2.0: Type-A x 2	USB 2.0: Type-A x 2	USB 2.0: Type-A x 2	USB 2.0: Type-A x 2	USB 2.0: Type-A x 3	USB 2.0: Type-A x 2	USB 2.0: Type-A x 2	—	USB 2.0: Type-A x 2	
Power	Power Requirements	AC 100 - 240 V: 50 / 60 Hz	AC 100 - 120 V, 200 - 240 V: 50 / 60 Hz	AC 100 - 240 V: 50 / 60 Hz	AC 100 - 120 V, 200 - 240 V: 50 / 60 Hz	AC 100 - 240 V: 50 / 60 Hz	AC 100 - 240 V: 50 / 60 Hz	AC 100 - 240 V: 50 / 60 Hz	AC 100 - 240 V: 50 / 60 Hz	AC 100 - 240 V: 50 / 60 Hz	
	Typical Power Consumption	34 W	36 W	38 W	29 W	67 W	31 W	26 W	15 W	19 W	
	Maximum Power Consumption	74 W	90 W	79 W	76 W	125 W	68 W	55 W	28 W	42 W	
	Power Save Mode	1 W or less	1.6 W or less	1 W or less	1.6 W or less	1.6 W or less	0.5 W or less	0.6 W or less	0.6 W or less	0.7 W or less	
Sensor	Backlight Sensor, Integrated Front Sensor, Presence Sensor, Ambient Light Sensor	Yes	Yes	Yes	Yes	Yes	Yes	Yes	Yes	—	
	Brightness Stabilization	Yes	Yes	Yes	Yes	Yes	Yes	Yes	Yes	—	
	Digital Uniformity Equalizer	Yes	Yes	Yes	Yes	Yes	Yes	Yes	Yes	—	
	Hybrid Gamma PXL	Yes	—	Yes	—	—	—	—	Yes	—	
Features & Functions	Work-and-Flow	Hide-and-Seek, Switch-and-Go, Point-and-Focus	—	Point-and-Focus	—	Hide-and-Seek, Switch-and-Go, Point-and-Focus	—	Point-and-Focus	—	—	
	Preset Modes	CAL Switch (DICOM, CAL1, CAL2, Custom, sRGB, Text)	CAL Switch (DICOM, CAL1, CAL2, Hybrid-y)	CAL Switch (DICOM, CAL1, CAL2, Custom, sRGB, Text)	CAL Switch (DICOM, CAL1, CAL2, Hybrid-y)	CAL Switch (DICOM, CAL1, CAL2, Custom, sRGB, Text)	CAL Switch (DICOM, Custom, CAL, Text)	CAL Switch (DICOM, CAL1, CAL2, Custom, sRGB, Text)	CAL Switch (DICOM, CAL1, CAL2, Custom, sRGB, Text)	Color Mode (User1, User2, sRGB, DICOM)	
	OSD Languages	English, German, French, Italian, Japanese, Simplified Chinese, Spanish, Swedish, Traditional Chinese	English, German, French, Italian, Japanese, Simplified Chinese, Spanish, Swedish, Traditional Chinese	English, German, French, Italian, Japanese, Simplified Chinese, Spanish, Swedish, Traditional Chinese	English, German, French, Italian, Japanese, Simplified Chinese, Spanish, Swedish, Traditional Chinese	English, German, French, Italian, Japanese, Simplified Chinese, Spanish, Swedish, Traditional Chinese	English, German, French, Italian, Japanese, Simplified Chinese, Spanish, Swedish, Traditional Chinese	English, German, French, Italian, Japanese, Simplified Chinese, Spanish, Swedish, Traditional Chinese	English, German, French, Italian, Japanese, Simplified Chinese, Spanish, Swedish, Traditional Chinese	English, German, French, Italian, Japanese, Simplified Chinese, Spanish, Swedish, Traditional Chinese	
	Net Weight	8 kg	10.2 kg	8.2 kg	10.2 kg	11.7 kg	8.7 kg	7.6 kg	6 kg	6.6 kg	
Physical Specifications	Net Weight (Without Stand)	5.2 kg	7.5 kg	5.4 kg	7.5 kg	7.5 kg	6 kg	4.7 kg	4.2 kg	6 kg	
	Hole Spacing (VESA Standard)	100 x 100 mm	100 x 100 mm	100 x 100 mm	100 x 100 mm	100 x 100 mm	100 x 100 mm	100 x 100 mm	100 x 100 mm	100 x 100 mm	
	Certifications & Standards ¹	CE (Medical Device), EN60601-1, ANSI/AAMI ES60601-1, CSA C22.2 No. 601-1, IEC60601-1, VCCI-B, FCC-B, CAN ICES-3 (B), RCM, RoHS, China RoHS, WEEE, CCC, EAC	CE (Medical Device), EN60601-1, ANSI/AAMI ES60601-1, CSA C22.2 No. 601-1, IEC60601-1, VCCI-B, FCC-B, CAN ICES-3 (B), RCM, RoHS, China RoHS, WEEE, CCC, EAC	CE (Medical Device), EN60601-1, ANSI/AAMI ES60601-1, CSA C22.2 No. 601-1, IEC60601-1, VCCI-B, FCC-B, CAN ICES-3 (B), RCM, RoHS, China RoHS, WEEE, CCC, EAC	CE (Medical Device), EN60601-1, ANSI/AAMI ES60601-1, CSA C22.2 No. 601-1, IEC60601-1, VCCI-B, FCC-B, CAN ICES-3 (B), RCM, RoHS, China RoHS, WEEE, CCC, EAC	CE (Medical Device), EN60601-1, ANSI/AAMI ES60601-1, CSA C22.2 No. 601-1, IEC60601-1, VCCI-B, FCC-B, CAN ICES-3 (B), RCM, RoHS, China RoHS, WEEE, CCC, EAC	CE (Medical Device), EN60601-1, ANSI/AAMI ES60601-1, CSA C22.2 No. 601-1, IEC60601-1, VCCI-B, FCC-B, CAN ICES-3 (B), RCM, RoHS, China RoHS, WEEE, CCC, EAC	CE (Medical Device), EN60601-1, ANSI/AAMI ES60601-1, CSA C22.2 No. 601-1, IEC60601-1, VCCI-B, FCC-B, CAN ICES-3 (B), RCM, RoHS, China RoHS, WEEE, CCC, EAC	CE (Medical Device), EN60601-1, ANSI/AAMI ES60601-1, CSA C22.2 No. 601-1, IEC60601-1, VCCI-B, FCC-B, CAN ICES-3 (B), RCM, RoHS, China RoHS, WEEE, CCC, EAC	CE (Medical Device), EN60601-1, ANSI/AAMI ES60601-1, CSA C22.2 No. 601-1, IEC60601-1, VCCI-B, FCC-B, CAN ICES-3 (B), RCM, RoHS, China RoHS, WEEE, CCC, EAC	CE (Medical Device), EN60601-1, ANSI/AAMI ES60601-1, CSA C22.2 No. 601-1, IEC60601-1, VCCI-B, FCC-B, CAN ICES-3 (B), RCM, RoHS, China RoHS, WEEE, CCC, EAC
FDA 1, 2, 3	510(k) Clearance for General Radiography	510(k) Clearance for General Radiography	510(k) Clearance for General Radiography	510(k) Clearance for General Radiography	510(k) Clearance for General Radiography	510(k) Clearance for General Radiography	510(k) Clearance for General Radiography	510(k) Clearance for General Radiography	510(k) Clearance for General Radiography	Class I	
Dedicated Software	Monitor Quality Control Software RadiCS	Supported	Supported	Supported	Supported	Supported	Supported	Supported	Supported	—	
	Signal Cables	DisplayPort (3 m) x 2	Dual Link DVI-D (3 m), DisplayPort (3 m)	DVI-D (3 m), DisplayPort (3 m)	DVI-D (3 m), DisplayPort (3 m)	Dual Link DVI-D (3 m), DisplayPort (3 m) x 2, DisplayPort (0.28 m)	DVI-D (3 m), DisplayPort (3 m)	DisplayPort (3 m)	DisplayPort (3 m)	DVI-D (3 m), DisplayPort (3 m)	
Supplied Accessories ⁴	Others	AC power cord (3 m), USB cable (3 m) x 2, Utility Disk (RadiCS LE, PDF instructions for use, PDF installation manual), instructions for use	AC power cord (3 m), USB cable (3 m), Utility Disk (RadiCS LE, user's manual)	AC power cord (3 m), USB cable (3 m), Utility Disk (RadiCS LE, PDF instructions for use, PDF installation manual), instructions for use	AC power cord (3 m), USB cable (3 m), Utility Disk (RadiCS LE, user's manual)	AC power cord (3 m), USB cable (3 m) x 2, Utility Disk (RadiCS LE, PDF instructions for use, PDF installation manual), instructions for use	AC power cord (3 m), USB cable (3 m), Utility Disk (RadiCS LE, PDF instructions for use, PDF installation manual), instructions for use	AC power cord (3 m), USB cable (3 m), Utility Disk (RadiCS LE, PDF instructions for use, PDF installation manual), instructions for use	AC power cord (3 m), USB cable (3 m), Utility Disk (RadiCS LE, PDF instructions for use, PDF installation manual), instructions for use	AC power cord (3 m), USB cable (3 m), audio cable (2.1 m), touch pen, holder for touch pen, Utility Disk (user's manual, touch panel driver, TPOffset), cleaning cloth, mask sheet	
	Warranty	Five Years	Five Years	Five Years	Five Years	Five Years	Five Years	Five Years	Five Years	Three Years	
Dimensions (Unit: mm)	Swivel										
	Swivel not supported with MS236WT.										

¹ Please contact the EIZO group company or distributor in your country for the latest information.

² Use FDA 510(k) Clearance monitor for diagnosis.

³ General radiography clearance models do not support display of mammography images for diagnosis.

⁴ May vary by country. Please contact EIZO for details.

GRAPHICS BOARDS

To get the most out of the extraordinary capabilities of our high-definition RadiForce monitors, we recommend that you use them with one of EIZO's dedicated graphics boards. Each board is used to specifically support RadiForce medical monitor solutions and achieves the native resolution and high performance required for making precise diagnoses.



MED-XN91



MED-XN71



MED-XN51LP



MED-XN31LP

Bus Interface	PCI-Express x16	PCI-Express x16	PCI-Express x16	PCI-Express x16
Compatible OS	Windows 10, 8.1, 7	Windows 10, 8.1, 7	Windows 10, 8.1, 7	Windows 10, 8.1, 7
Memory	8 GB	5 GB	4 GB	2 GB
Display Colors / Grayscale Tones	10-bit, 8-bit	10-bit, 8-bit	10-bit, 8-bit	10-bit, 8-bit
Output Terminals	DisplayPort x 4 (Daisy chain supported)	DisplayPort x 4 (Daisy chain supported)	Mini DisplayPort x 4 (Daisy chain supported)	Mini DisplayPort x 3 (Daisy chain supported)
Supplied Conversion Cables	DisplayPort - DVI-D	DisplayPort - DVI-D	Mini DisplayPort - DisplayPort x 2, Mini DisplayPort - DVI-D	Mini DisplayPort - DisplayPort x 2, Mini DisplayPort - DVI-D
Maximum Connected Monitors	Four Monitors	Four Monitors	Four Monitors	Four Monitors
Maximum Power Consumption	105 W	75 W	47 W	30 W
Slot (s)	1	1	1	1
Chassis	Standard	Standard	Standard & Low-Profile	Standard & Low-Profile
Dimensions (W x H)	241.3 x 111.2 mm	200.7 x 111.2 mm	153.9 x 68.9 mm	153.9 x 68.9 mm
RX1270	Recommended	Yes	Yes	Yes
RX850	Recommended	Yes	Yes	Yes
RX660	Recommended	Yes	Yes	Yes
RX560	Recommended	Yes	Yes	Yes
GX560	Recommended	Yes	Yes	Yes
RX360	Yes	Recommended	Yes	Yes
GX340	Yes	Recommended	Yes	Yes
RX250	Yes	Yes	Recommended	Yes
GX240	Yes	Yes	Recommended	Yes
MX315W	Yes	Yes	Recommended	Yes
MX242W	Yes	Yes	Yes	Recommended
MX216	Yes	Yes	Yes	Recommended
MX194	Yes	Yes	Yes	Recommended
MS236WT	Yes	Yes	Yes	Recommended

Graphics board compatibility is subject to change without notice. Please check EIZO website for updates.

MONITOR QUALITY CONTROL SOLUTIONS

Monitor Quality Control Software & Calibration Sensor

RadiCS[®] UX2

Compatible Operating Systems	Windows 10 Windows 8.1 Windows 7 SP1 Windows Server 2016 Standard Windows Server 2012 R2 Standard macOS Mojave (10.14) macOS High Sierra (10.13)
Display Functions	DICOM Part 14 GSDF, CIE, Exponential (gamma value), Log Linear, Linear, User definition
Interface	USB, RS232C (Windows only)
Languages	English, German, Japanese, Chinese, French
Package Contents	RadiCS DVD-ROM (RadiCS, User's Manual), UX2 Sensor, Adsorptive sheet for the replacement, cleaning cloth, UX2 Sensor Instructions for Use

Network QC Management Software

RadiNET[®] Pro

Manageable Number of PCs / Monitors	1000 PCs / 8000 Monitors Maximum
Administrator PC Browser	Microsoft Windows Internet Explorer 11.0 Google Chrome 73.0 Microsoft Edge 42.1
Administrator PC Resolution	1024 x 768 Minimum
Server PC Operating Systems	Windows Server 2016 Standard Windows Server 2012 R2 Standard Windows 10 (64-bit) Windows 7 SP1 (64-bit)
Server PC Database	SQL Server 2016 Standard / Express Edition SP2 SQL Server 2014 Standard / Express Edition SP2
Server PC Hard Disk Drive	150 GB Minimum
Server PC Memory	4 GB Minimum
Languages	English, German, Japanese, Chinese, French

RadiCS Version Up Kit

Software for upgrading RadiCS.



RadiCS Client License

A license to use RadiCS with other commercially available monitors.



5 Monitor Access License for RadiNET[®] Pro Version 5

Monitor Access License must be purchased for every 5 additional monitors when using RadiNET Pro Version 5.

ACCESSORY

Comfort Light for Reading Rooms

RadiLight[™]



Cabinet Color	Black
Power Requirements	USB power
Weight	370 g
Dimensions (W x H x D)	184 x 185.5 x 15.7 mm
Certifications & Standards	CE, IEC60950-1, CSA C22.2 No. 60950-1, VCCI-B, FCC-B, CAN ICES-3(B), RCM, RoHS, China RoHS, WEEE, EAC
Supplied Accessories	dedicated cable, user's manual, mounting bracket, spacers, screws
Warranty	Three years



The brightness can be adjusted to 10 different levels.

Care for the Radiologist's Eyes

Relief with Gentle Light

RadiLight attaches to the back of RadiForce monitors and shines a light on the wall behind it. This eases the amount of concentrated light traveling to the radiologist's eyes for reducing eyestrain while not impacting the reading room's overall ambient lighting or visibility of the images on the screen.



Flicker-Free

RadiLight is a flicker-free lighting solution that reduces eyestrain.

Spotlight

RadiLight Focus allows you to check or read printed documents or see your keyboard and other tools.



Easily Attachable

RadiLight easily attaches to the back of the monitor stand so it does not take up desk space.

Innovative Solutions

Built-In Calibration Sensors

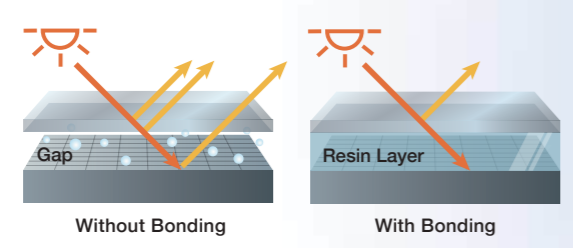


Automatically calibrates while you work

IP Decoding Solutions



In-House Optical Bonding



Market-Focused Cloud Solutions



Visual Technology Company



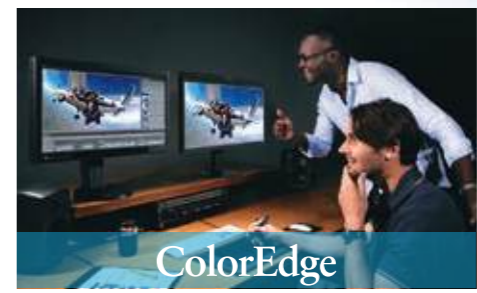
50+ Years of Expertise

Extensive Market Reach



FlexScan

Business Enterprise



ColorEdge

Creative Work



CuratOR / RadiForce

Healthcare



DuraVision

Security & Surveillance / Maritime



Raptor / Re/Vue / SafeGuard

Air Traffic Control



FORIS

Home Entertainment



Research and Development



Manufacturing



Quality Control



Customization

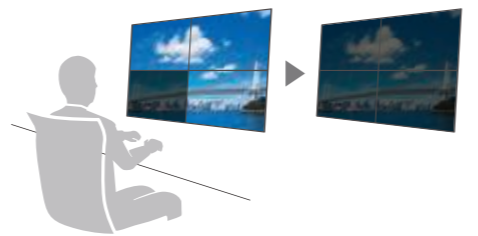


Global Reach

Software for Improved Workflow



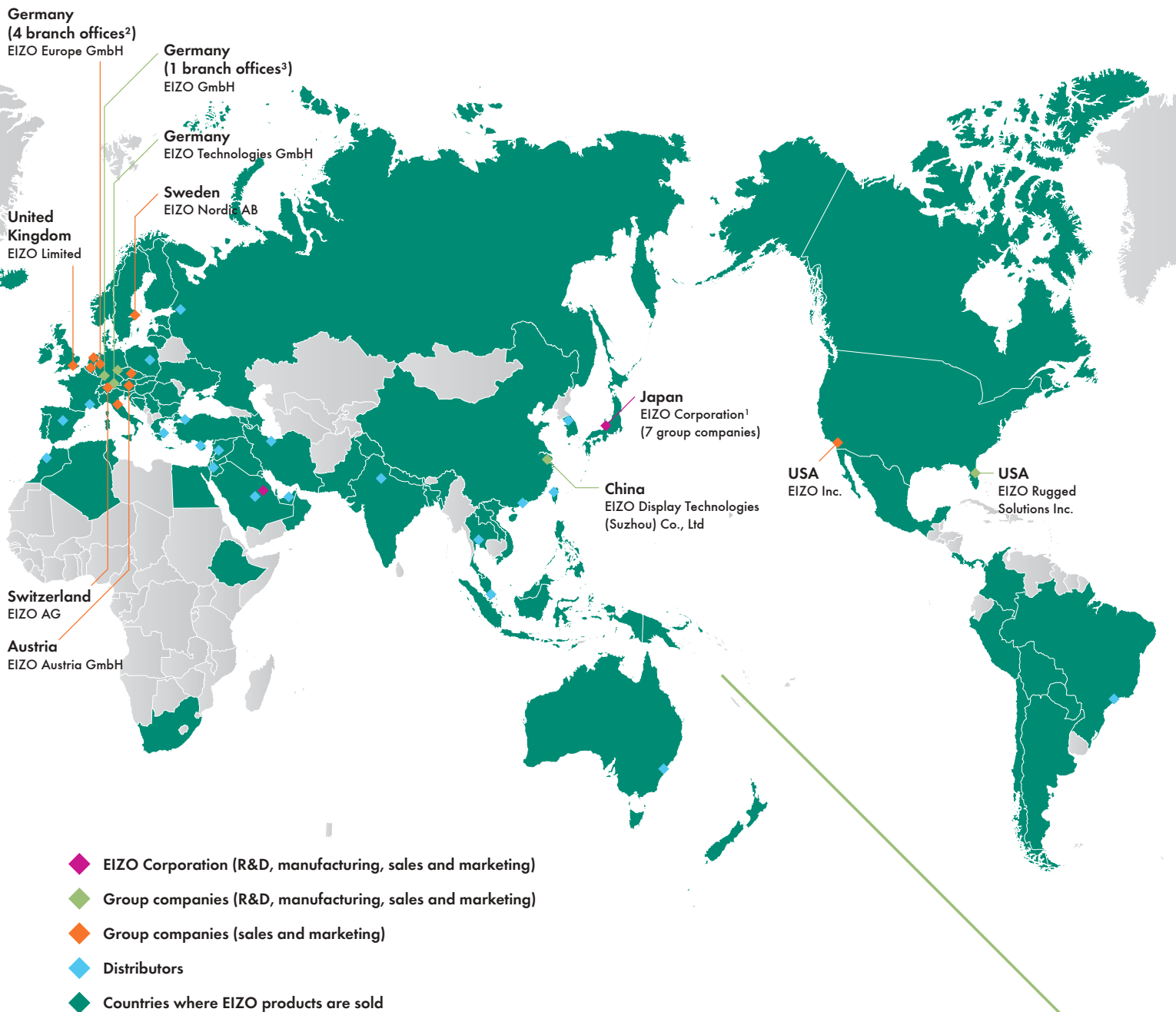
Use a single mouse across two PCs



Synchronized adjustment of multiple monitors



Simplified CMS with automatic software and printer settings adjustment



¹ EIZO Corporation has a branch office in Saudi Arabia.

² EIZO Europe GmbH is headquartered in Germany with branch offices in Belgium, Italy, the Netherlands, and the Czech Republic.

³ EIZO GmbH is headquartered in Rülzheim with a branch office in Plauen.

EIZO Corporation

153 Shimokashiwano, Hakusan, Ishikawa 924-8566 Japan

Phone +81-76-277-6794, Fax +81-76-277-6793

www.eizoglobal.com

EIZO, the EIZO Logo, ColorEdge, CuratOR, DuraVision, FlexScan, FORIS, RadiCS, RadiForce, RadiNET, Raptor, and ScreenManager are registered trademarks of EIZO Corporation in Japan and other countries.

RadiLight and Re/Vue are trademarks of EIZO Corporation.

DICOM is the registered trademark of the National Electrical Manufacturers Association for its standards publications relating to digital communications of medical information. All other company names, product names, and logos are trademarks or registered trademarks of their respective companies.

Specifications are subject to change without notice.

Copyright © 2019 EIZO Corporation. All rights reserved.

Printed in Japan, 10, 2019, 4K (191001)