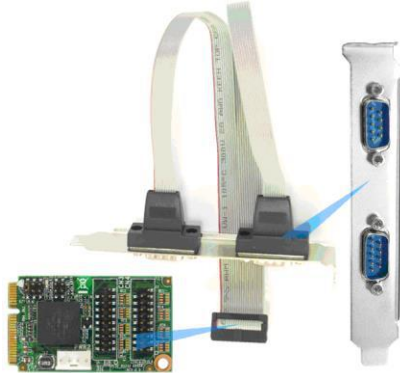
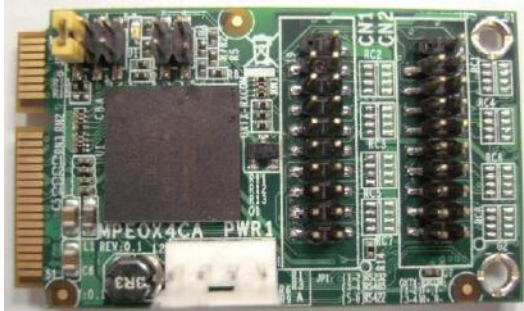


# ADMPEOX4CA

4-port Serial Expansion  
Mini-PCI Express Expansion Card



Dimension: 30 x 50.95 mm

Chipset: Oxford OXPCIe954

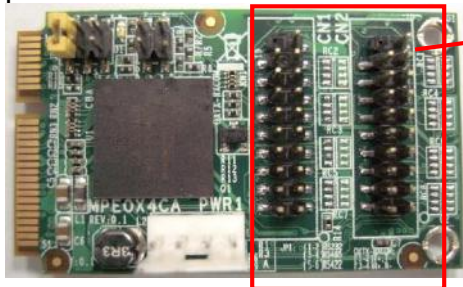
### Features:

- Support 3 \* RS-232 ports & 1 \* RS-232/RS-422/RS-485 port
- Asynchronous baud rates up to 15Mbps
- RoHS Compliant
- Two 25cm cables included with RS-232 ports on full height bracket

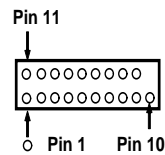
### Compatibility:

- All motherboards with full-size Mini-PCIE slot

### 1. pin headers

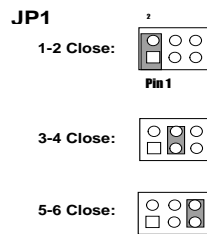
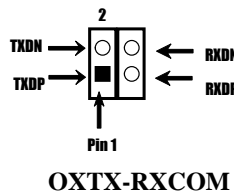
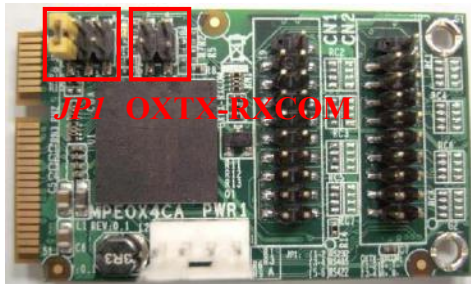


CN1, CN2



Pin Number	Pin Define	Pin Number	Pin Define
Pin1	-DCD1	Pin11	-DSR1
Pin2	SIN1	Pin12	-RTS1
Pin3	SOUT1	Pin13	-CTS1
Pin4	-DTR1	Pin14	-RI1
Pin5	GND	Pin15	
Pin6	-DCD2	Pin16	-DSR2
Pin7	SIN2	Pin17	-RTS2
Pin8	SOUT2	Pin18	-CTS2
Pin9	-DTR2	Pin19	-RI2
Pin10	GND		

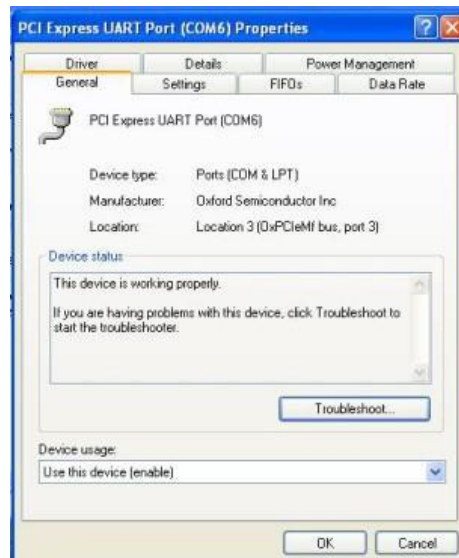
2. RS485/RS422 :



1-2 short	RS232
3-4 short	RS485
5-6 short	RS422

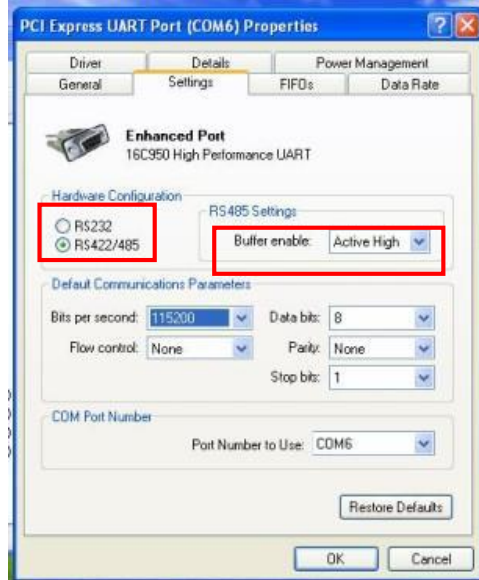
Port 3 supports multi function RS-232/RS-485/RS-422  
When configuring RS-422/RS-485, you must first change hardware configuration to RS-485 and Buffer enable to “ active high ” .

Step1:  
Find the port3 device 1n the device manager



Step2:

1. Hardware configuration change to “ RS422/485 “
2. RS485 settings change to “ Active high “



### 3. POWER pin Header ( PWR1) :

Pin1	5VCC
Pin2	GND
Pin3	GND
Pin4	NC

\*Power must be connected.



Jetway Computer Corporation  
8058 Central Ave., Newark, CA 94560  
Phone: 510-857-0130 Fax: 510-857-0138  
[www.jetwaycomputer.com](http://www.jetwaycomputer.com)

